

OF 14

[illegible]

This drawing is confidential. The reproduction or use of ideas, arrangements, designs, and plans are prohibited without written consent of Erhard Rom. Written dimensions will always override scale should a conflict arise. Responsibility falls solely on the vendors to notify Erhard Rom of any discrepancies between this drawing and actual dimensions. This drawing represents concepts and suggestions only. The design team is not responsible nor held liable for the structural, mechanical or electrical execution of this drawing. Any structural components within this drawing must be approved by a qualified engineer before installation begins. Furthermore any other work done is to be performed by qualified personnel only. Equipment and installation must conform to all local and Federal codes and fire safety regulations.

SCENIC DESIGNERS:

ERHARD ROM  
OLIVIA TORTORELLA  
MADDIE CORTESE  
EMILY GUERCIA



MONTCLAIR STATE  
UNIVERSITY

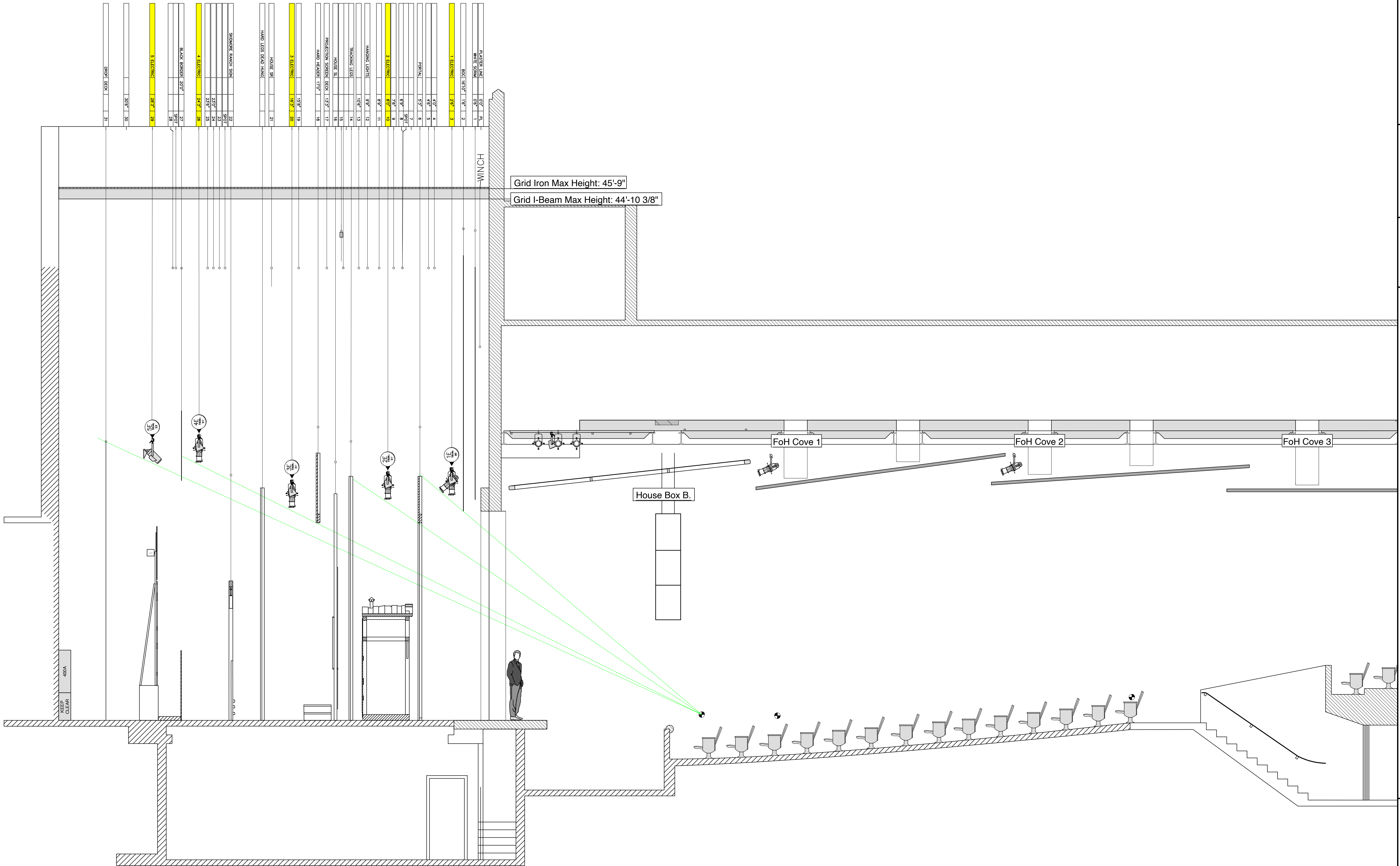
AT  
MEMORIAL  
AUDITORIUM

DIRECTOR  
FRANCINE ESPIRITU

OKLAHOMA!  
SL SECTION VIEW  
SCALE: 1/4" = 1'-0"  
DATE: 1/8/2025  
DRAFTED BY: OLIVIA TORTORELLA

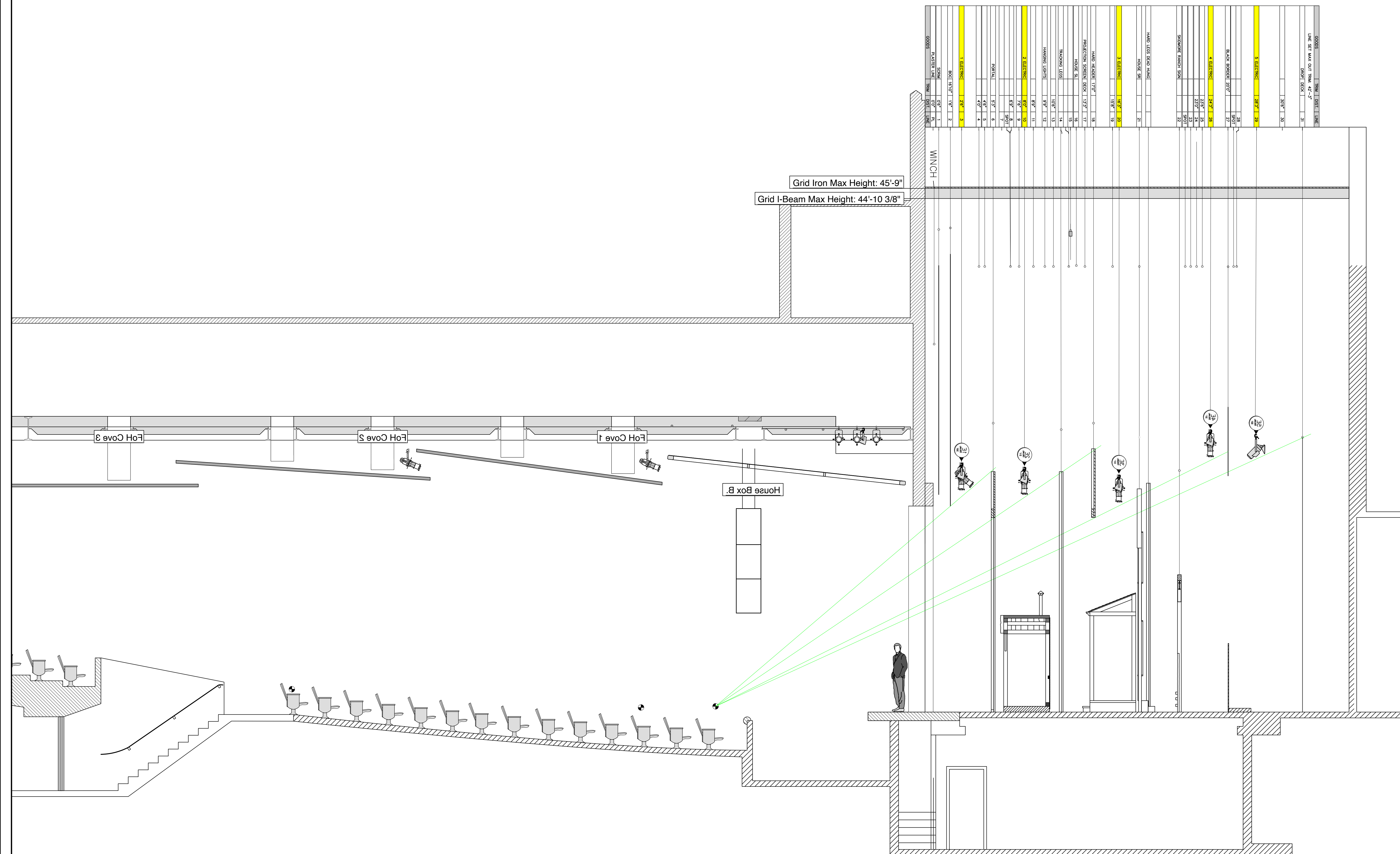
PLATE NO.

2



OF 14

OF 14





This drawing is confidential. The reproduction or use of ideas, arrangements, designs, and plans are prohibited without written consent of Erhard Rom. Written dimensions will always override scale should a conflict arise. Responsibility falls solely on the vendors to notify Erhard Rom of any discrepancies between this drawing and actual dimensions. This drawing represents concepts and suggestions only. The design team is not responsible nor held liable for the structural, mechanical or electrical execution of this drawing. Any structural components within this drawing must be approved by a qualified engineer before installation begins. Furthermore any other work done is to be performed by qualified personnel only. Equipment and installation must conform to all local and federal codes and fire safety regulations.

SCENIC DESIGNERS:

ERHARD ROM  
OLIVIA TORTORELLA  
MADDIE CORTESE  
EMILY GUERCIA



MONTCLAIR STATE  
UNIVERSITY

AT  
MEMORIAL  
AUDITORIUM

DIRECTOR  
FRANCINE ESPIRITU

OKLAHOMA!

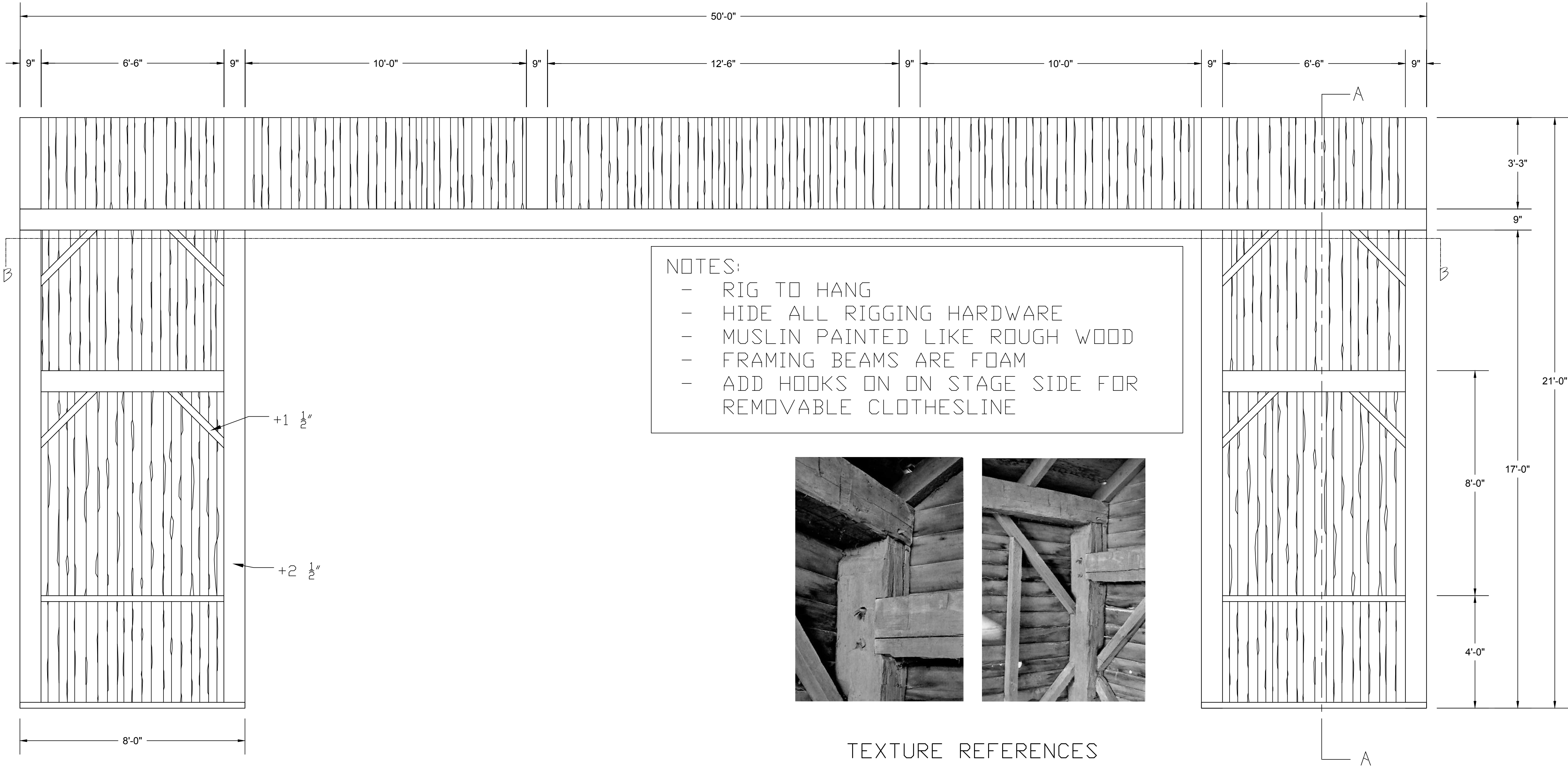
PAINTED FLOOR

SCALE: 1/2" = 1'-0"    DATE: 1/8/2025    DRAFTED BY: OLIVIA TORTORELLA

PLATE NO.

4

RIG TO FLY



PORTAL

PLAN VIEW

This drawing is confidential. The reproduction or use of ideas, arrangements, designs, and plans are prohibited without written consent of Erhard Rom. Written dimensions will always override scale should a conflict arise. Responsibility falls solely on the vendors to notify Erhard Rom of any discrepancies between this drawing and actual dimensions. This drawing represents concepts and suggestions only. The design team is not responsible nor held liable for the structural, mechanical or electrical execution of this drawing. Any structural components within this drawing must be approved by a qualified engineer before installation begins. Furthermore any other work done is to be performed by qualified personnel only. Equipment and installation must conform to all local and federal codes and fire safety regulations.

SCENIC DESIGNERS:

ERHARD ROM  
OLIVIA TORTORELLA  
MADDIE CORTESE  
EMILY GUERCIA



MONTCLAIR STATE UNIVERSITY

AT  
MEMORIAL  
AUDITORIUM

DIRECTOR  
FRANCINE ESPIRITU

OKLAHOMA!

PORTAL

SCALE: 1/2" = 1'-0" DATE: 1/8/2025 DRAFTED BY: OLIVIA TORTORELLA

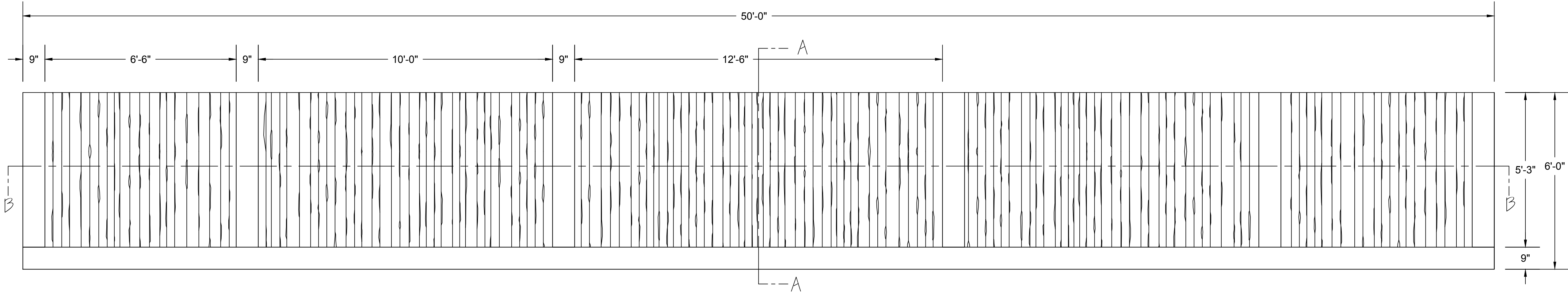
PLATE NO.

5



- NOTES:
- RIG TO HANG
- HIDE ALL RIGGING HARDWARE
- MUSLIN PAINTED LIKE ROUGH WWOOD
- FRAMING BEAMS ARE FOAM

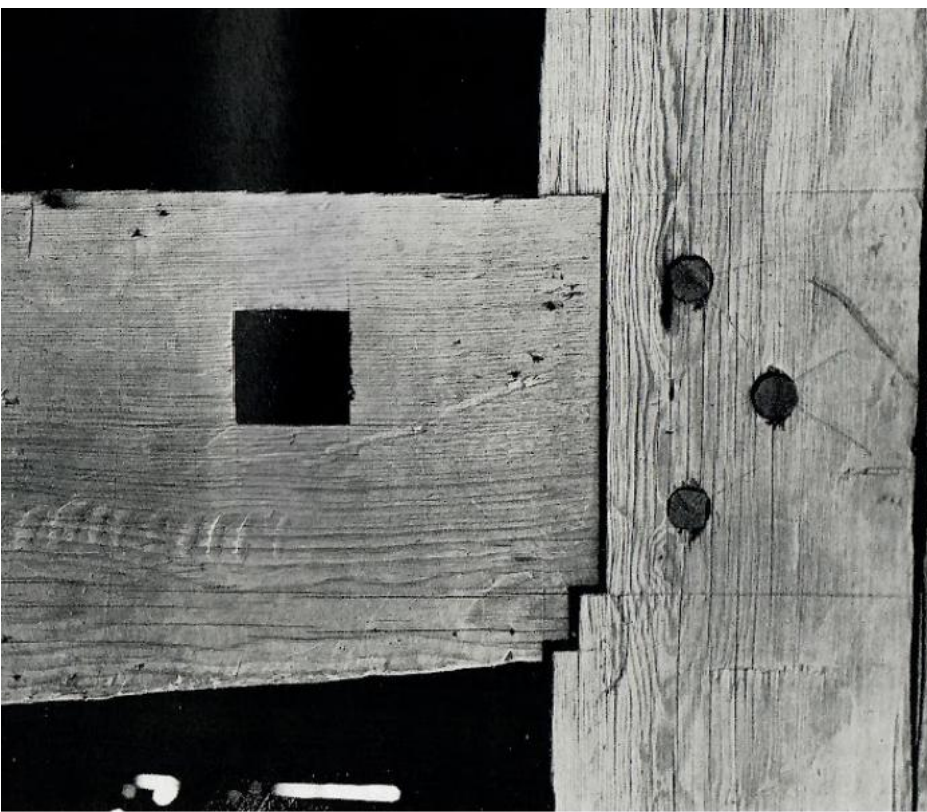
RIG TO FLY



SECTION A-A

HEADER

PLAN VIEW



TEXTURE REFERENCES

This drawing is confidential. The reproduction or use of ideas, arrangements, designs, and plans are prohibited without written consent of Erhard Rom. Written dimensions will always override scale should a conflict arise. Responsibility falls solely on the vendors to notify Erhard Rom of any discrepancies between this drawing and actual dimensions. This drawing represents concepts and suggestions only. The design team is not responsible nor held liable for the structural, mechanical or electrical execution of this drawing. Any structural components within this drawing must be approved by a qualified engineer before installation begins. Furthermore any other work done is to be performed by qualified personnel only. Equipment and installation must conform to all local and federal codes and fire safety regulations.

SCENIC DESIGNERS:

ERHARD ROM  
OLIVIA TORTORELLA  
MADDIE CORTESE  
EMILY GUERCIA



SCENIC DESIGNER  
S.D. 4110

MONTCLAIR STATE  
UNIVERSITY

AT  
MEMORIAL  
AUDITORIUM

DIRECTOR  
FRANCINE ESPIRITU

OKLAHOMA!

HEADER

DRAFTED BY: OLIVIA TORTORELLA

DATE: 1/8/2025

SCALE: 1/2" = 1'-0"

PLATE NO.

6



This drawing is confidential. The reproduction or use of ideas, arrangements, designs, and plans are prohibited without written consent of Erhard Rom. Written dimensions will always override scale should a conflict arise. Responsibility falls solely on the vendors to notify Erhard Rom of any discrepancies between this drawing and actual dimensions. This drawing represents concepts and suggestions only. The design team is not responsible for the structural, mechanical or electrical execution of this drawing. Any structural components within this drawing must be approved by a qualified engineer before installation begins. Furthermore any other work done is to be performed by qualified personnel only. Equipment and installation must conform to all local and federal codes and fire safety regulations.

SCENIC DESIGNERS:

ERHARD ROM  
OLIVIA TORTORELLA  
MADDIE CORTESE  
EMILY GUERCIA



MONTCLAIR STATE  
UNIVERSITY  
  
AT  
MEMORIAL  
AUDITORIUM

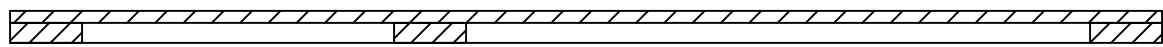
DIRECTOR  
FRANCINE ESPIRITU

OKLAHOMA!  
TRAVELING LEGS

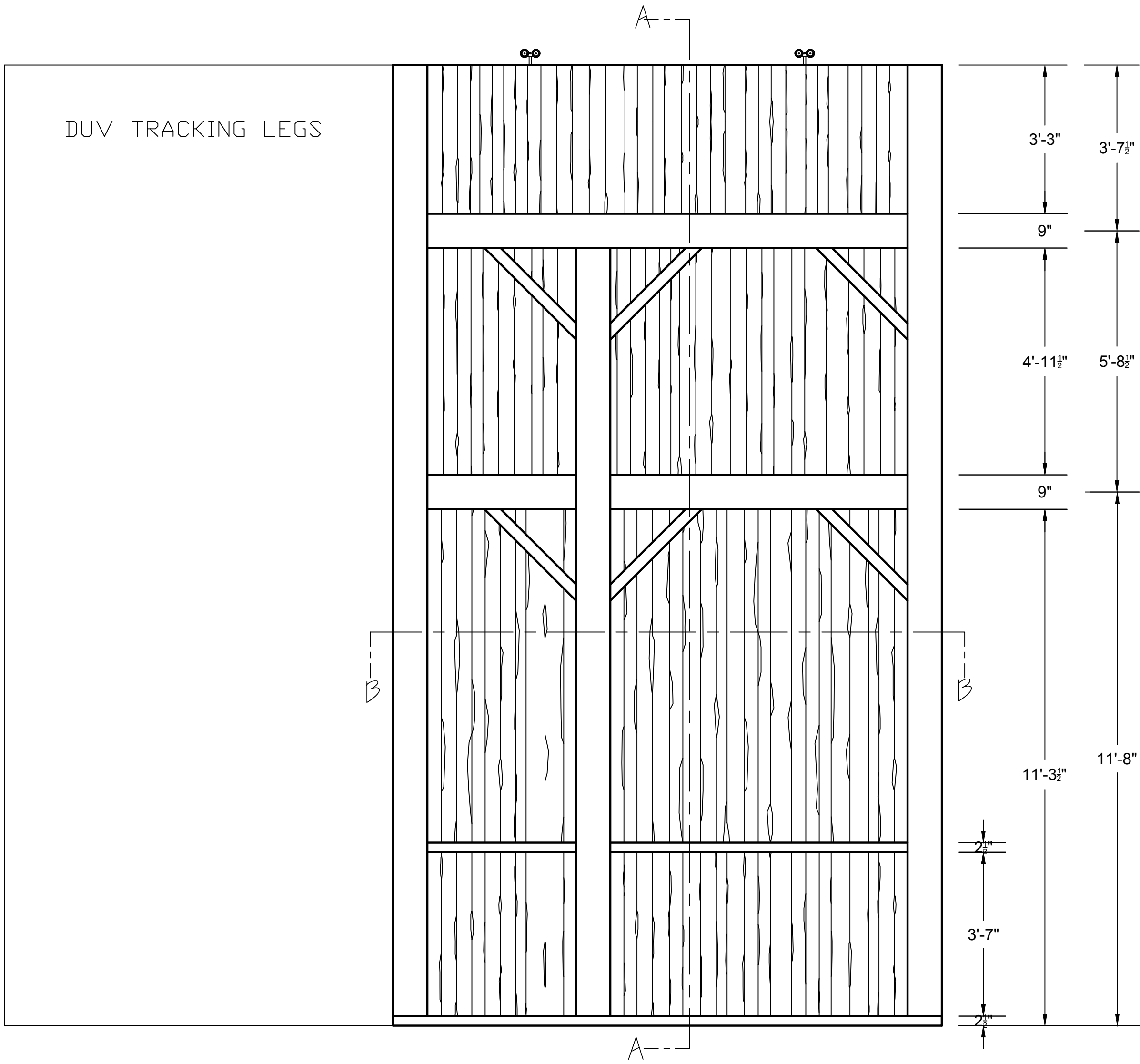
SCALE: 1/2" = 1'-0"    DATE: 1/8/2025    DRAFTED BY: OLIVIA TORTORELLA

PLATE NO.

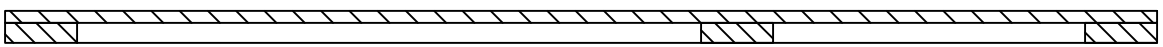
7



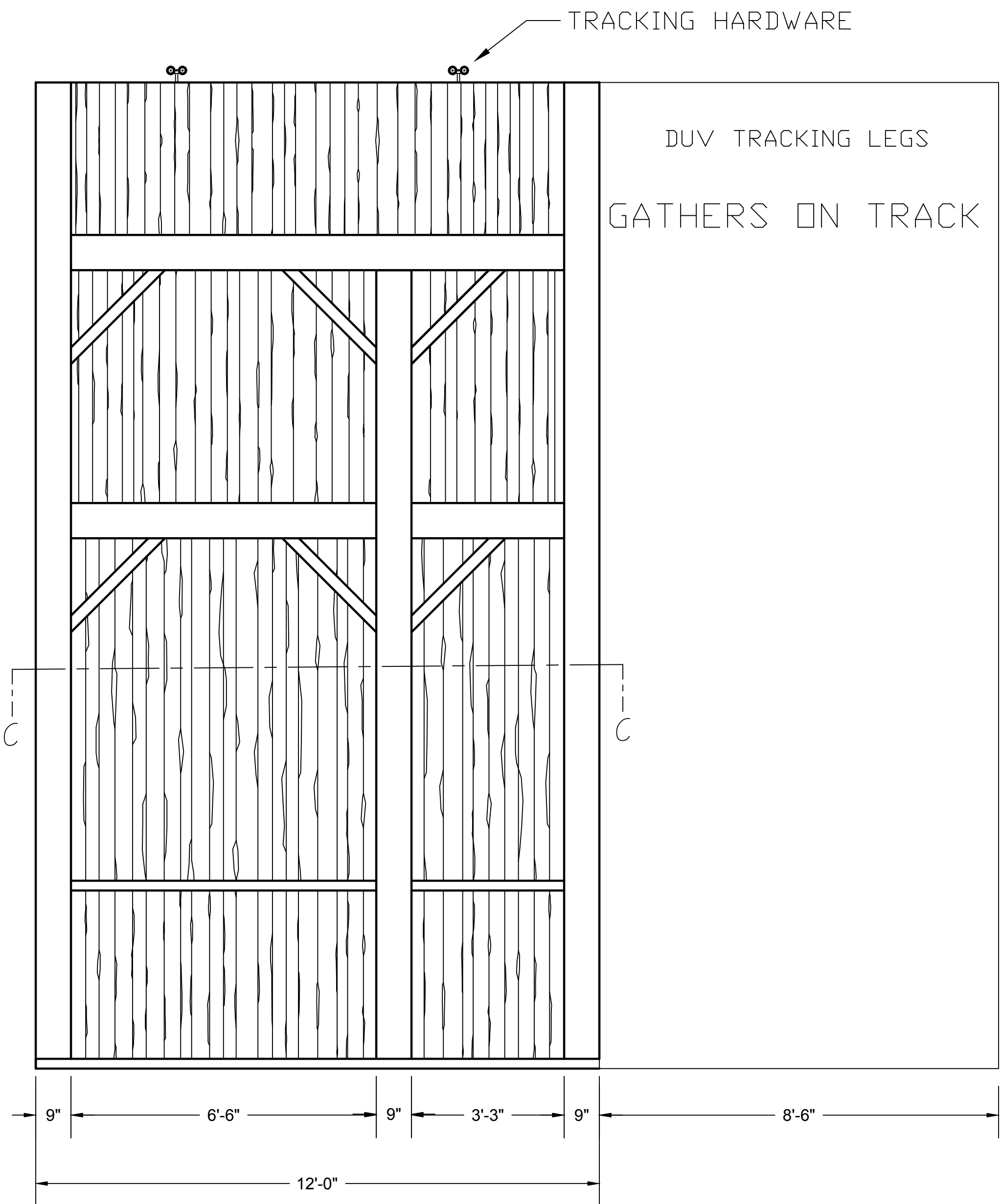
SECTION B-B



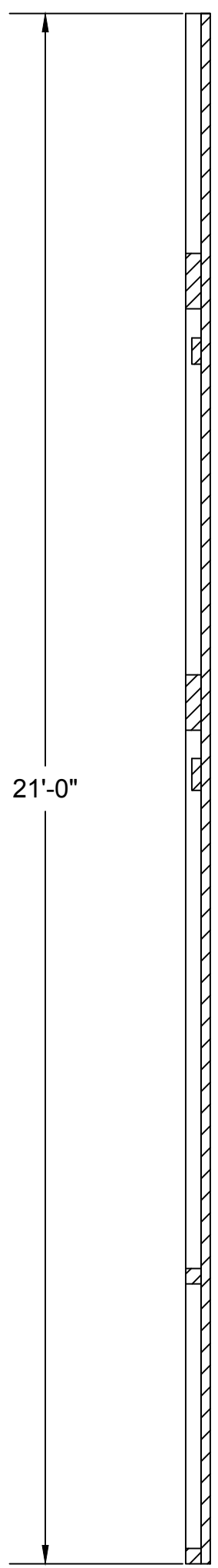
TRACKING PANEL SR



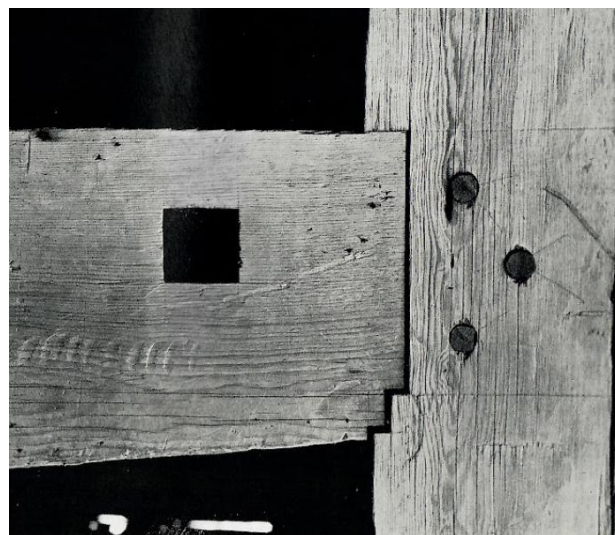
SECTION C-C



TRACKING PANEL SL



SECTION A-A



TEXTURE REFERENCES

- NOTES:
- TRACKING PANELS
  - MUSLIN PAINTED LIKE ROUGH WOOD
  - FRAMING BEAMS ARE FOAM
  - ADD HOOKS ON ONSTAGE SIDE FOR REMOVABLE CLOTHESLINE



This drawing is confidential. The reproduction or use of ideas, arrangements, designs, and plans are prohibited without written consent of Erhard Rom. Written dimensions will always override scale should a conflict arise. Responsibility falls solely on the vendors to notify Erhard Rom of any discrepancies between this drawing and actual dimensions. This drawing represents concepts and suggestions only. The design team is not responsible nor held liable for the structural, mechanical or electrical execution of this drawing. Any structural components within this drawing must be approved by a qualified engineer before installation begins. Furthermore any other work done is to be performed by qualified personnel only. Equipment and installation must conform to all local and federal codes and fire safety regulations.

SCENIC DESIGNERS:

ERHARD ROM  
OLIVIA TORTORELLA  
MADDIE CORTESE  
EMILY GUERCIA



MONTCLAIR STATE  
UNIVERSITY  
  
AT  
MEMORIAL  
AUDITORIUM

DIRECTOR  
FRANCINE ESPIRITU

OKLAHOMA!

HARD LEGS

DRAFTED BY: OLIVIA TORTORELLA

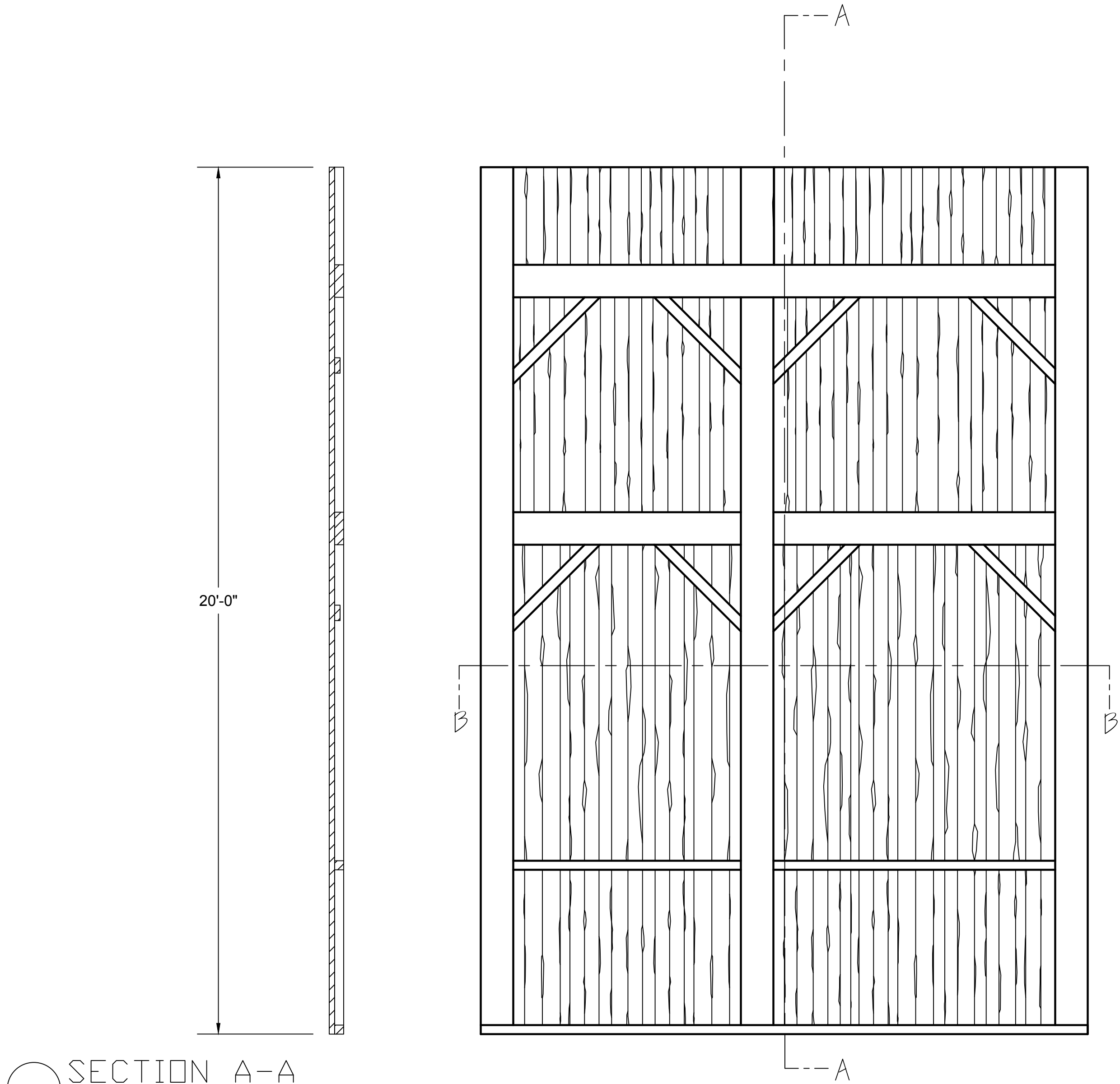
DATE: 1/8/2025

SCALE: 1/2" = 1'-0"

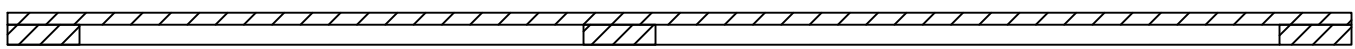
PLATE NO.

8

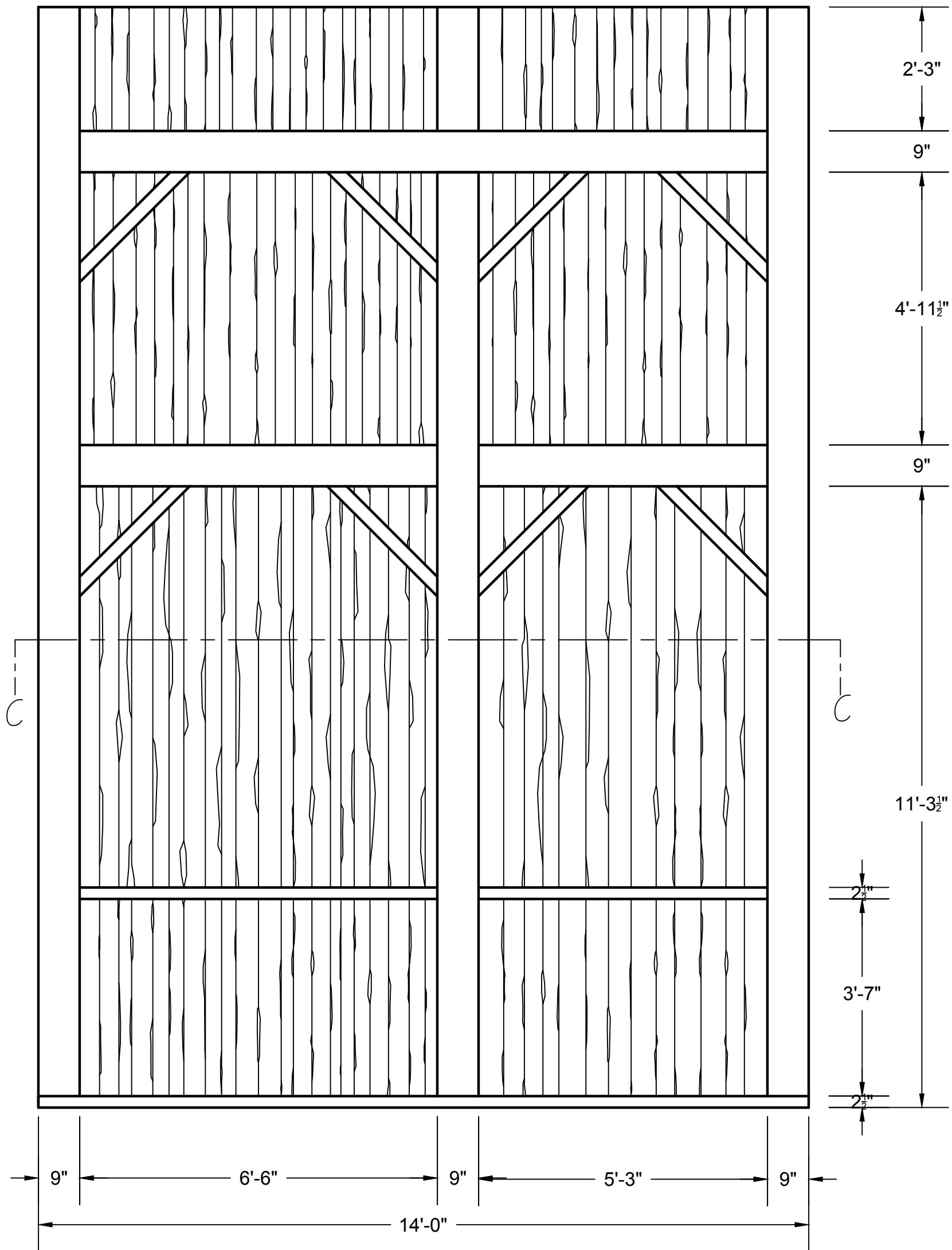
DEAD HUNG



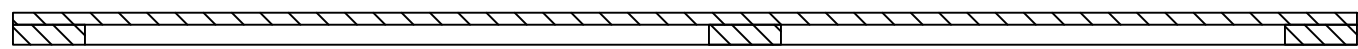
SR HARD LEG



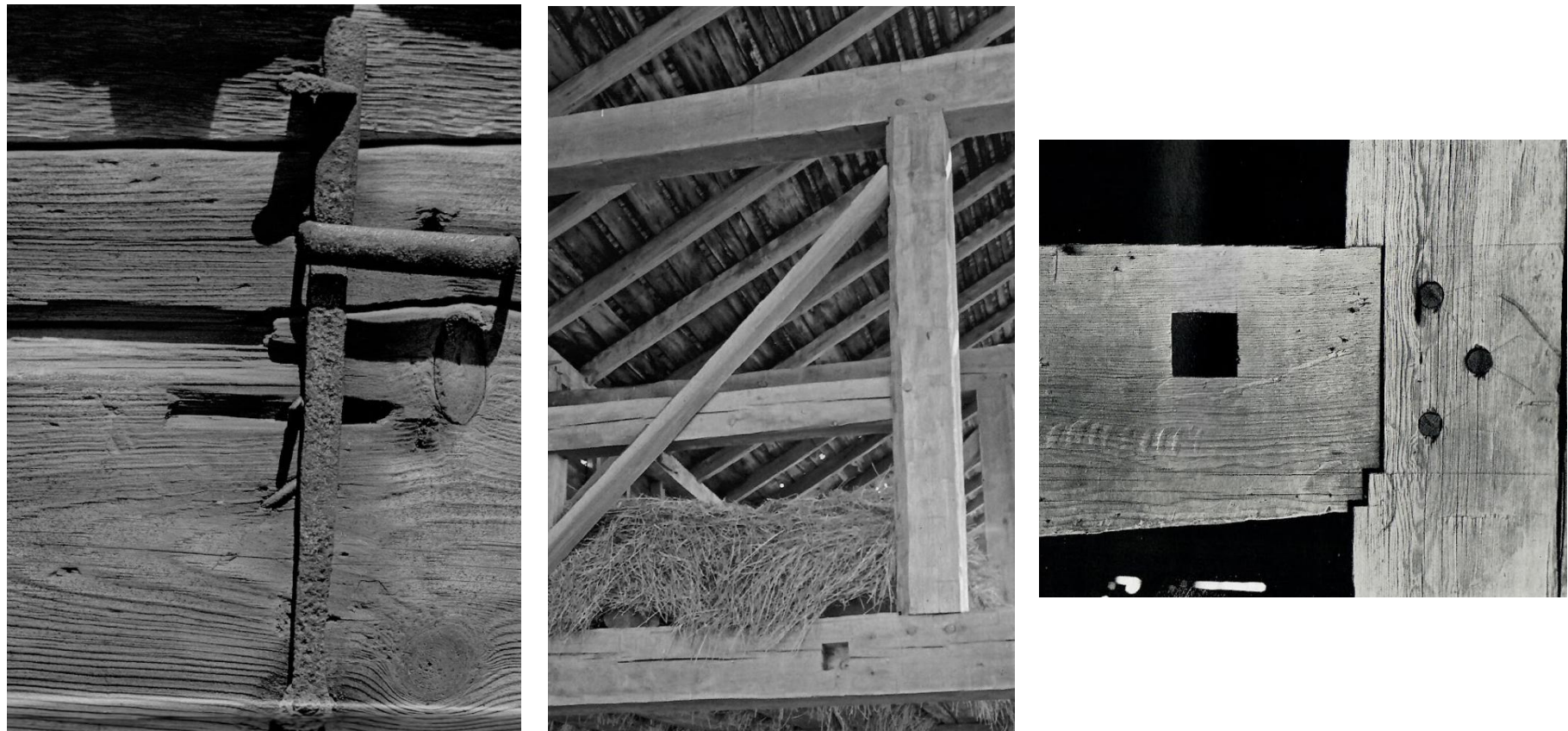
SECTION B-B



SL HARD LEG



SECTION C-C



TEXTURE REFERENCES

- NOTES:
- DEAD HUNG
  - MUSLIN PAINTED LIKE ROUGH WOOD
  - FRAMING BEAMS ARE FOAM
  - ADD HOOKS ON ON STAGE SIDE FOR REMOVABLE CLOTHESLINE



This drawing is confidential. The reproduction or use of ideas, arrangements, designs, and plans are prohibited without written consent of Erhard Rom. Written dimensions will always override scale should a conflict arise. Responsibility falls solely on the vendors to notify Erhard Rom of any discrepancies between the drawing and actual dimensions. This drawing represents concepts and suggestions only. The design team is not responsible nor held liable for the structural, mechanical or electrical execution of this drawing. Any structural components within this drawing must be approved by a qualified engineer before installation begins. Furthermore any other work done is to be performed by qualified personnel only. Equipment and installation must conform to all local and federal codes and fire safety regulations.

SCENIC DESIGNERS:

ERHARD ROM  
OLIVIA TORTORELLA  
MADDIE CORTESE  
EMILY GUERCIA



MONTCLAIR STATE  
UNIVERSITY

AT  
MEMORIAL  
AUDITORIUM

DIRECTOR  
FRANCINE ESPIRITU

OKLAHOMA!  
HOUSE SR  
DRAFTED BY: OLIVIA TORTORELLA  
DATE: 1/8/2025  
SCALE: AS NOTED

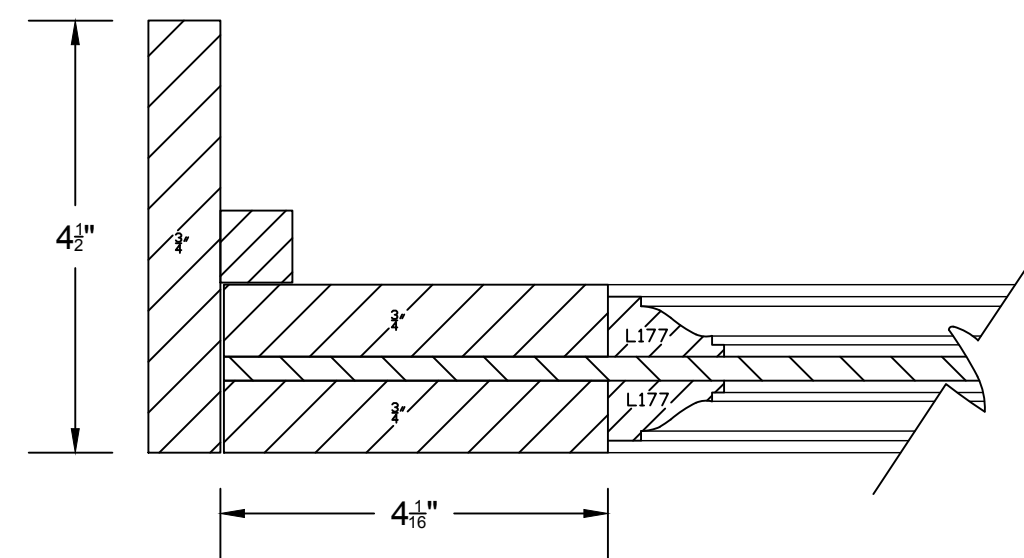
PLATE NO.

9

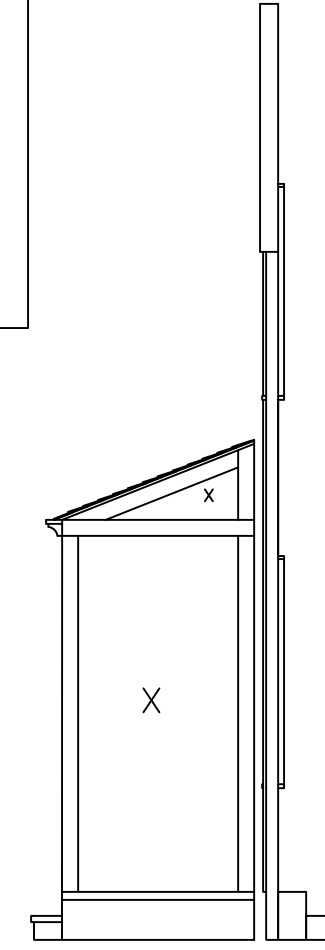
RIG TO FLY

NOTES:

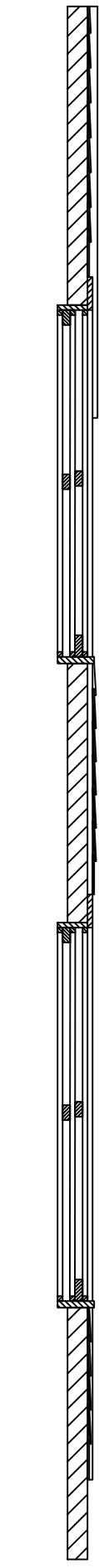
- RIG TO FLY]
- HIDE ALL RIGGING HARDWARE
- WINDOWS FUNCTION
- SHEER CURTAINS



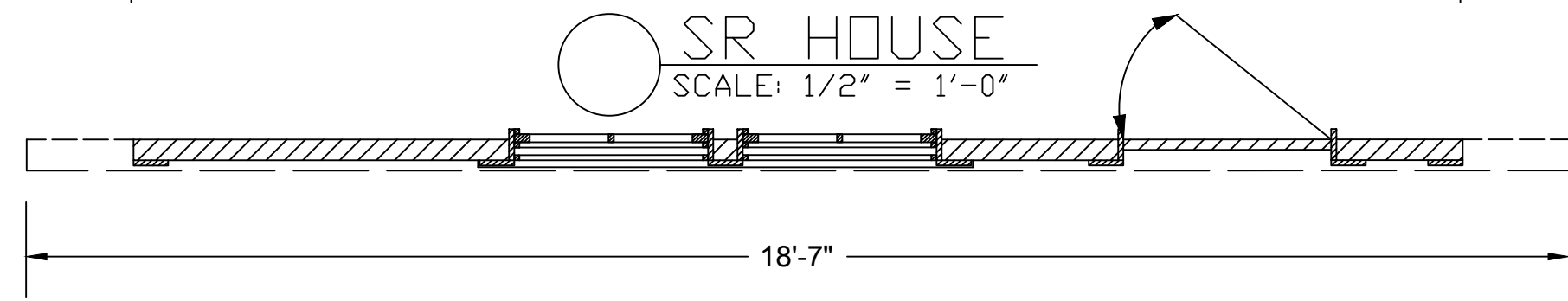
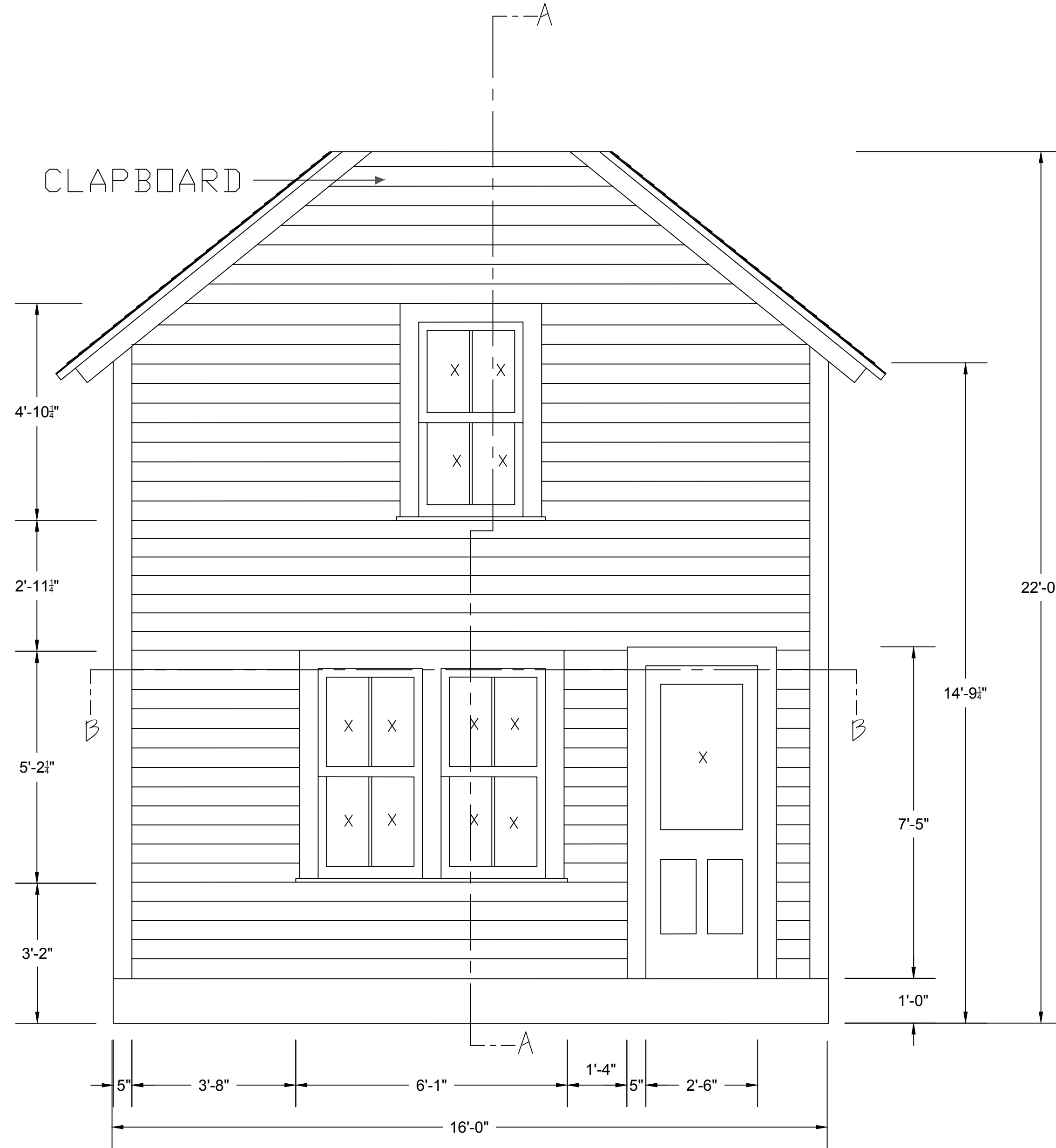
DOOR DETAIL  
SCALE: 6" = 1'-0"



SR PORCH AND HOUSE  
SCALE: 1/4" = 1'-0"



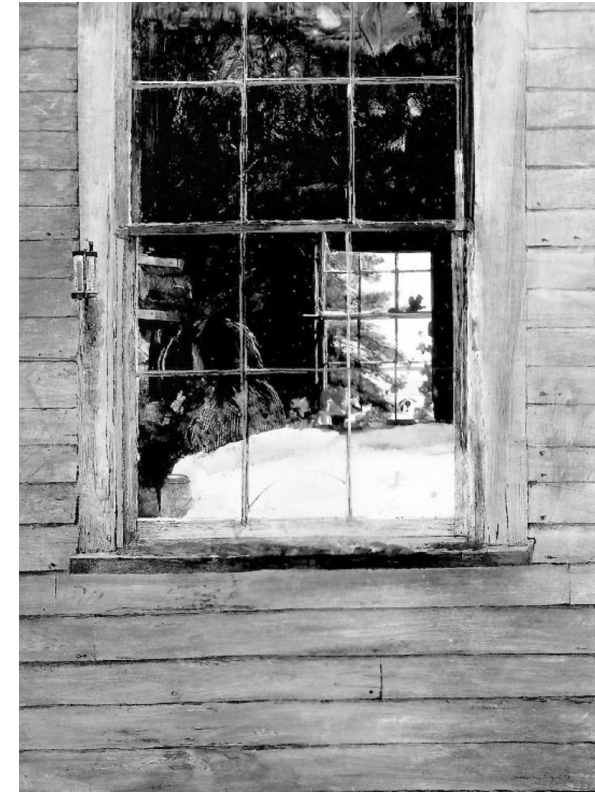
SECTION A-A  
SCALE: 1/2" = 1'-0"



SECTION B-B  
SCALE: 1/2" = 1'-0"

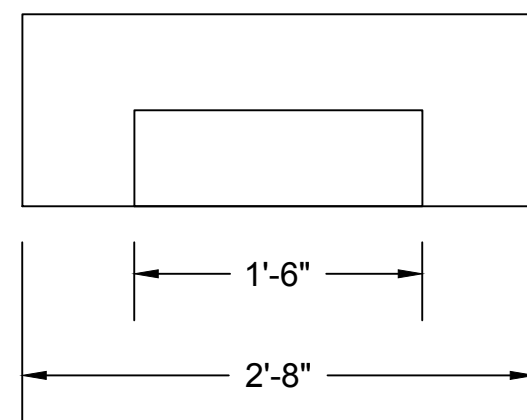


CEDAR SHINGLES  
TEXTURE REFERENCE

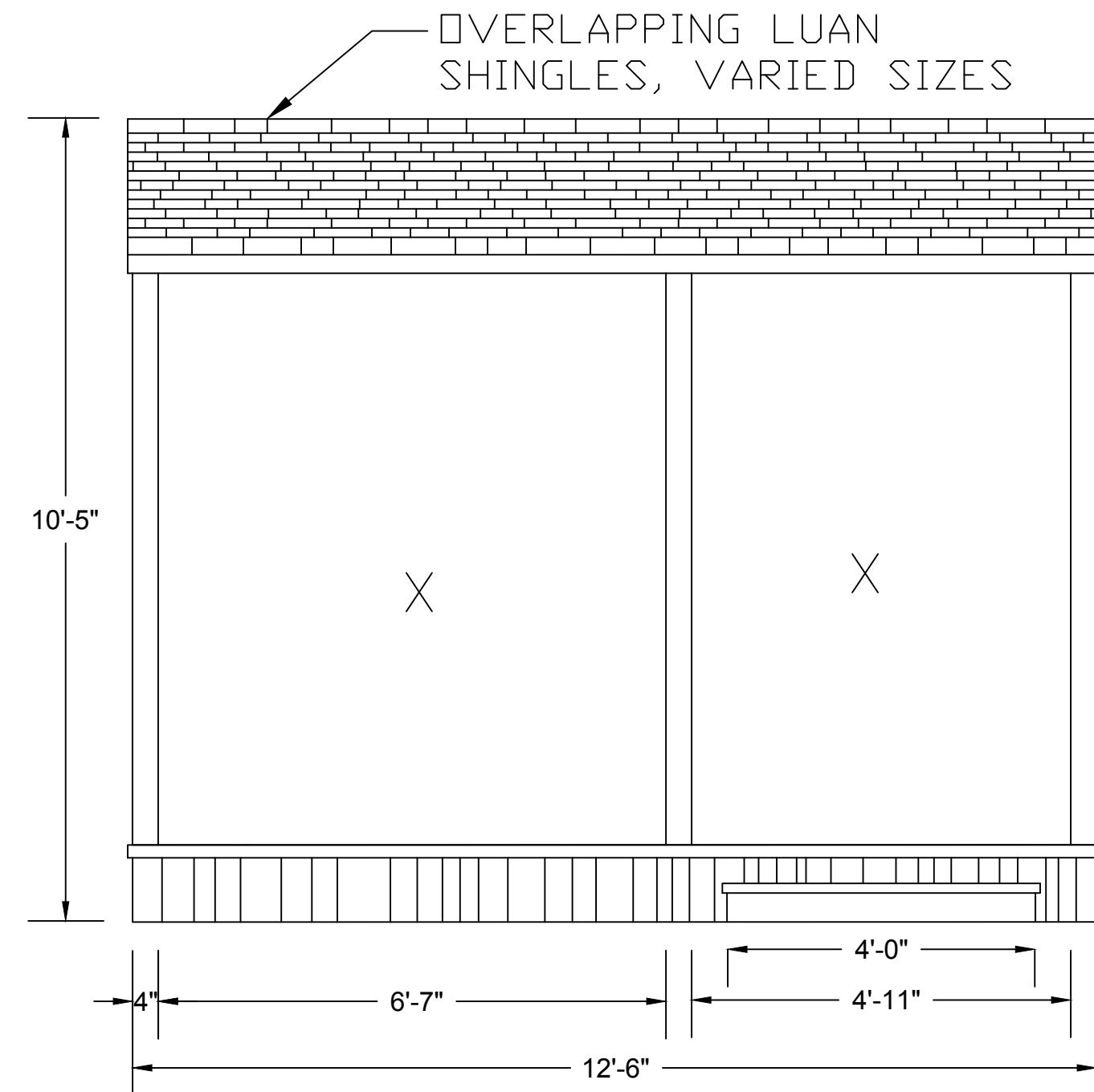
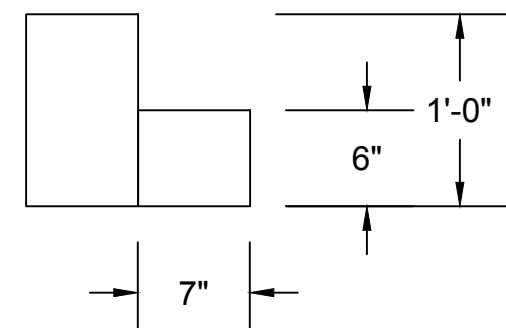


CLAPBOARD  
REFERENCE

- NOTES:
- CARRIED ON AND OFF BY CREW

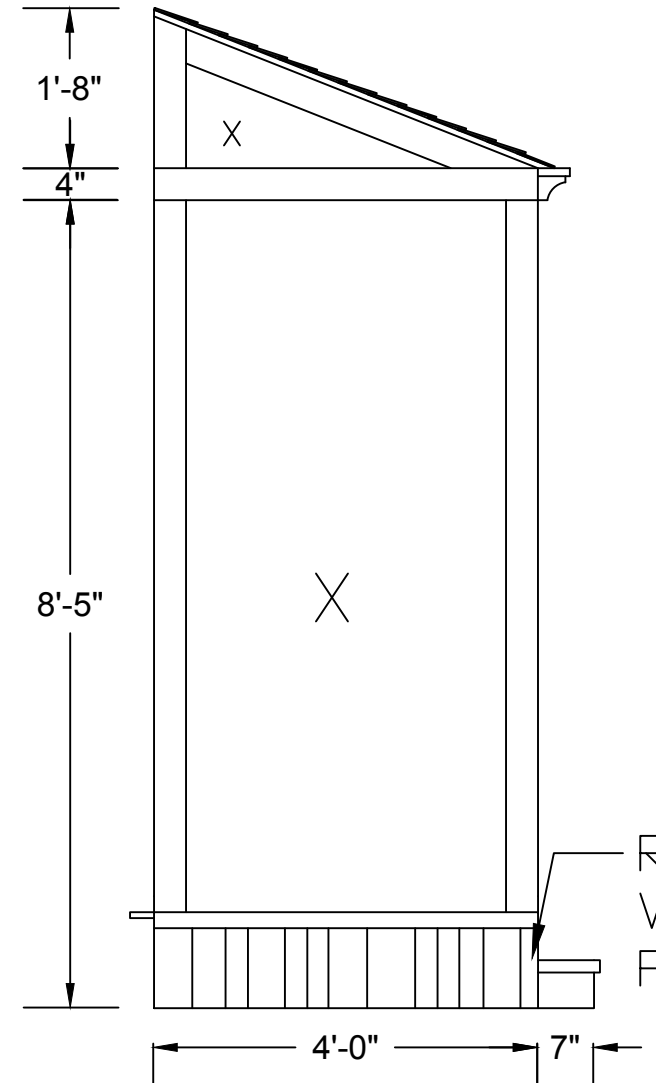


ESCAPE STAIRS  
SCALE: 1" = 1'-0"

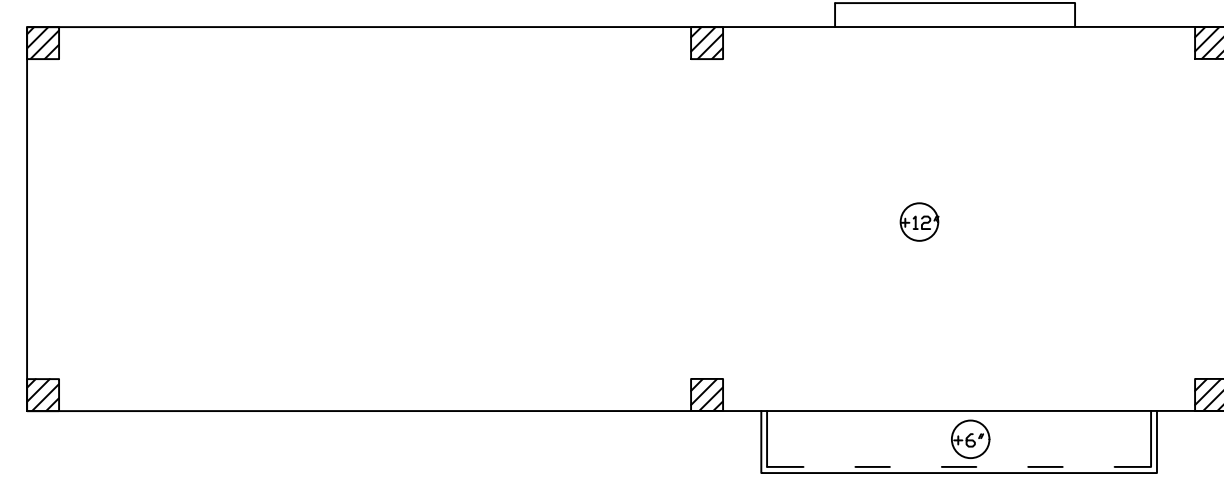


SR PORCH  
SCALE: 1/2" = 1'-0"

STANDABLE  
ROOF AND  
LADDER



SIDE VIEW  
SCALE: 1/2" = 1'-0"



PLAIN VIEW  
SCALE: 1/2" = 1'-0"

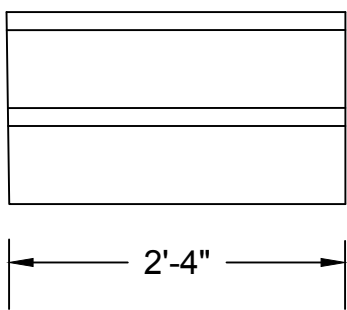
- NOTES:
- STANDABLE ROOF TO REACH TOP WINDOW
  - NEEDS DETACHABLE LADDER
  - UNIT ROLLS ON AND OFF

- NOTES:
- RIG HOUSE TO FLY

- HIDE ALL RIGGING HARDWARE

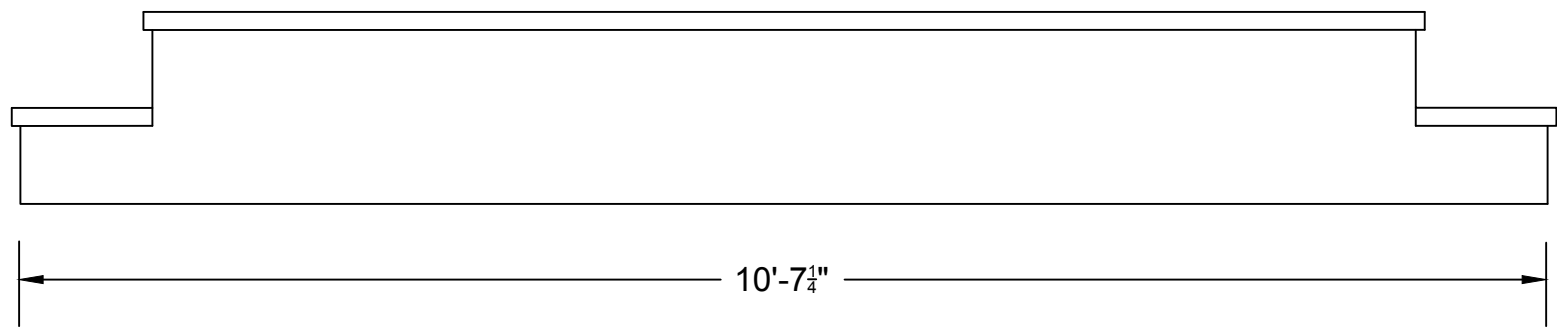
- FUNCTIONING WINDOW WITH SHEER CURTAIN INSIDE

- NOTES:
- UNIT ROLLS ON AND OFF



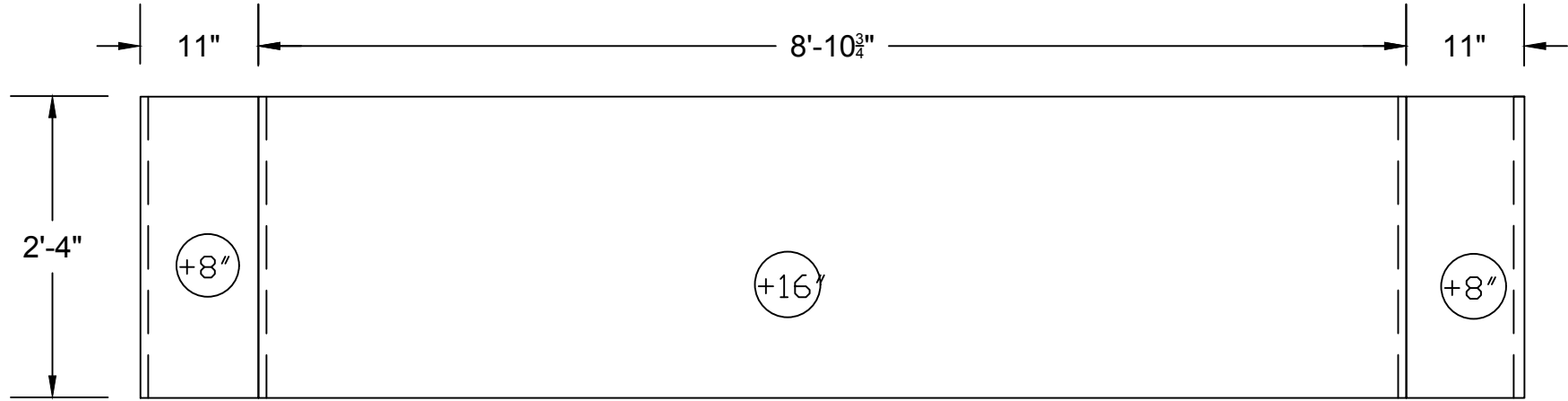
SIDE VIEW

SCALE: 3/4" = 1'-0"



SL PORCH

SCALE: 3/4" = 1'-0"



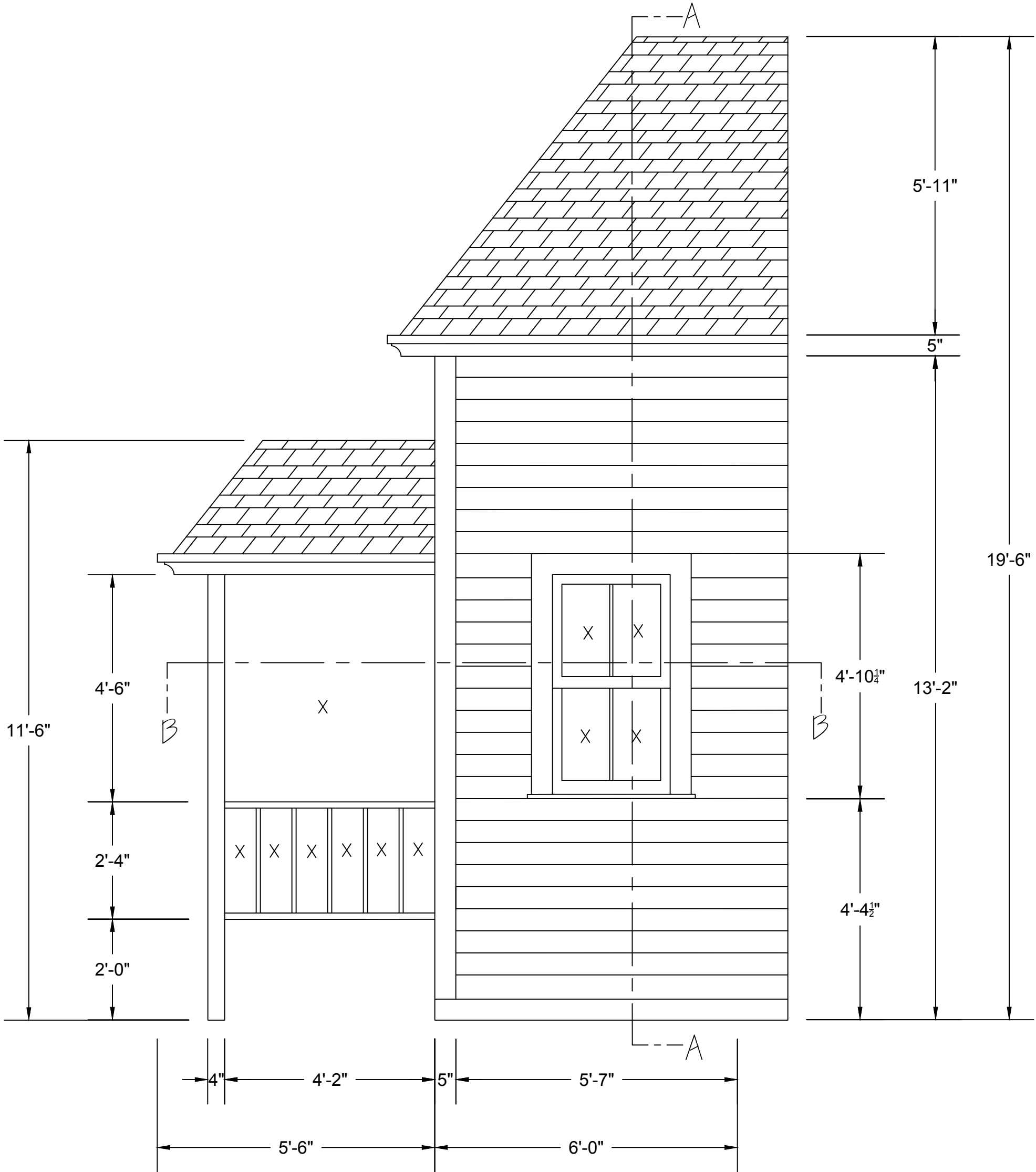
PLAN VIEW

SCALE: 3/4" = 1'-0"



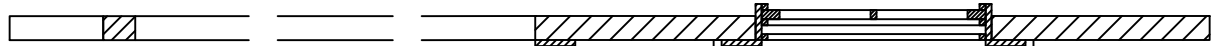
SL PORCH AND HOUSE

SCALE: 1/4" = 1'-0"



SL HOUSE

SCALE: 1/2" = 1'-0"

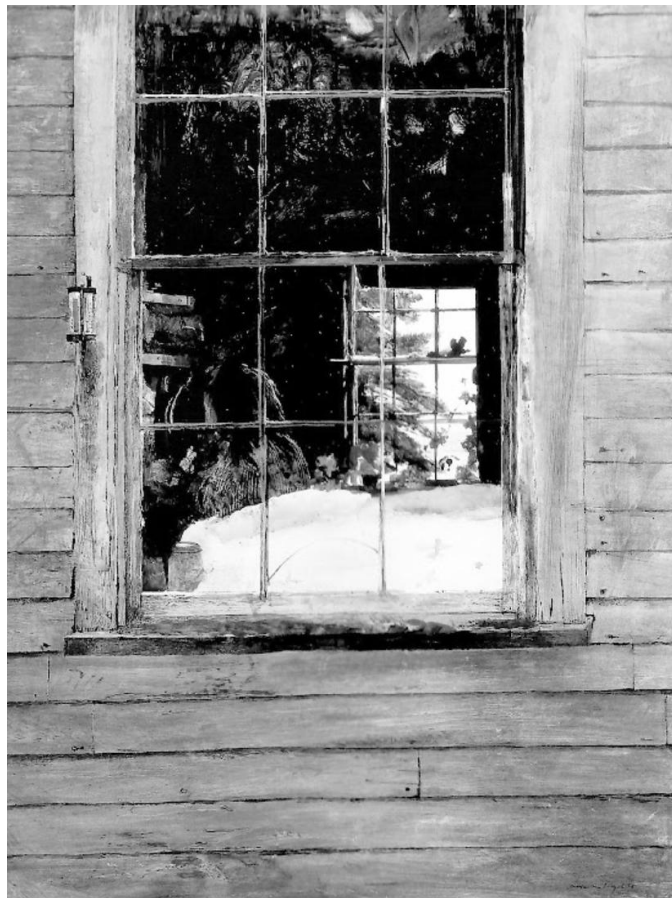


SECTION B-B

SCALE: 1/2" = 1'-0"



CEDAR SHINGLES  
TEXTURE REFERENCE



CLAPBOARD  
REFERENCE

This drawing is confidential. The reproduction or use of ideas, arrangements, designs, and plans are prohibited without written consent of Erhard Rom. Written dimensions will always override scale should a conflict arise. Responsibility falls solely on the vendors to notify Erhard Rom of any discrepancies between this drawing and actual dimensions. This drawing represents concepts and suggestions only. The design team is not responsible nor held liable for the structural, mechanical or electrical execution of this drawing. Any structural components within this drawing must be approved by a qualified engineer before installation begins. Furthermore any other work done is to be performed by qualified personnel only. Equipment and installation must conform to all local and Federal codes and fire safety regulations.

SCENIC DESIGNERS:

ERHARD ROM  
OLIVIA TORTORELLA  
MADDIE CORTESE  
EMILY GUERCIA



SCENIC DESIGNER  
S.D. 4110

MONTCLAIR STATE  
UNIVERSITY

AT  
MEMORIAL  
AUDITORIUM

DIRECTOR  
FRANCINE ESPIRITU

OKLAHOMA!  
HOUSE SL

SCALE: AS NOTED      DATE: 1/8/2025      DRAFTED BY: OLIVIA TORTORELLA

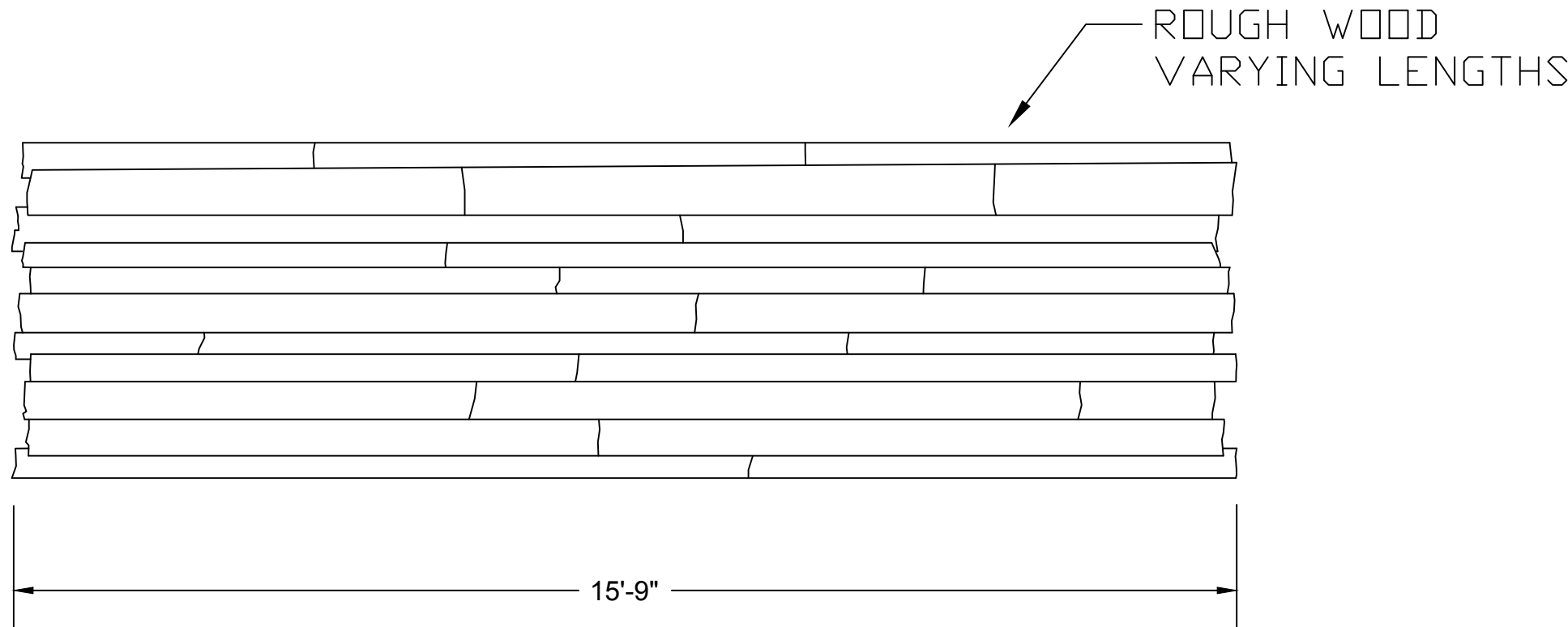
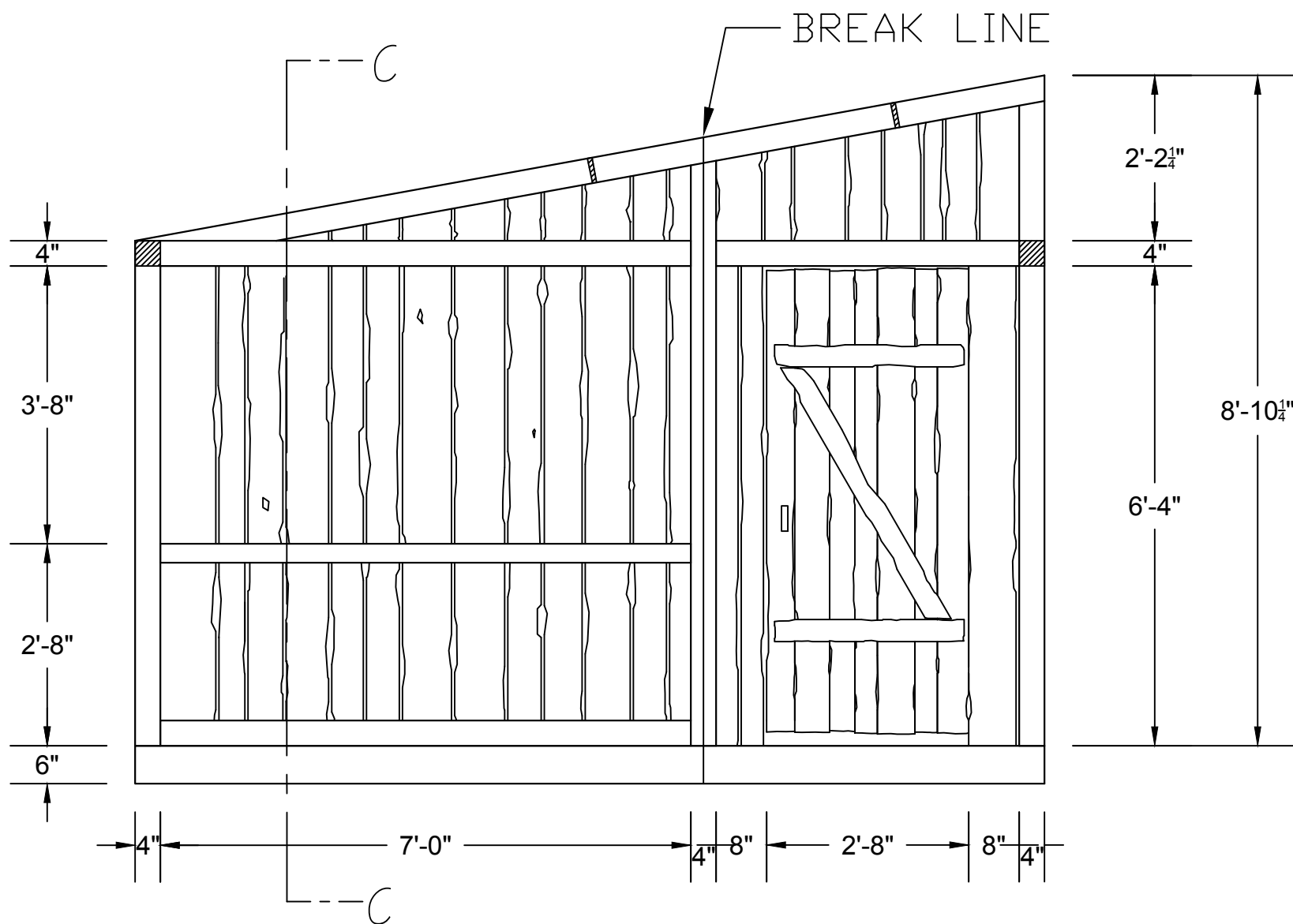
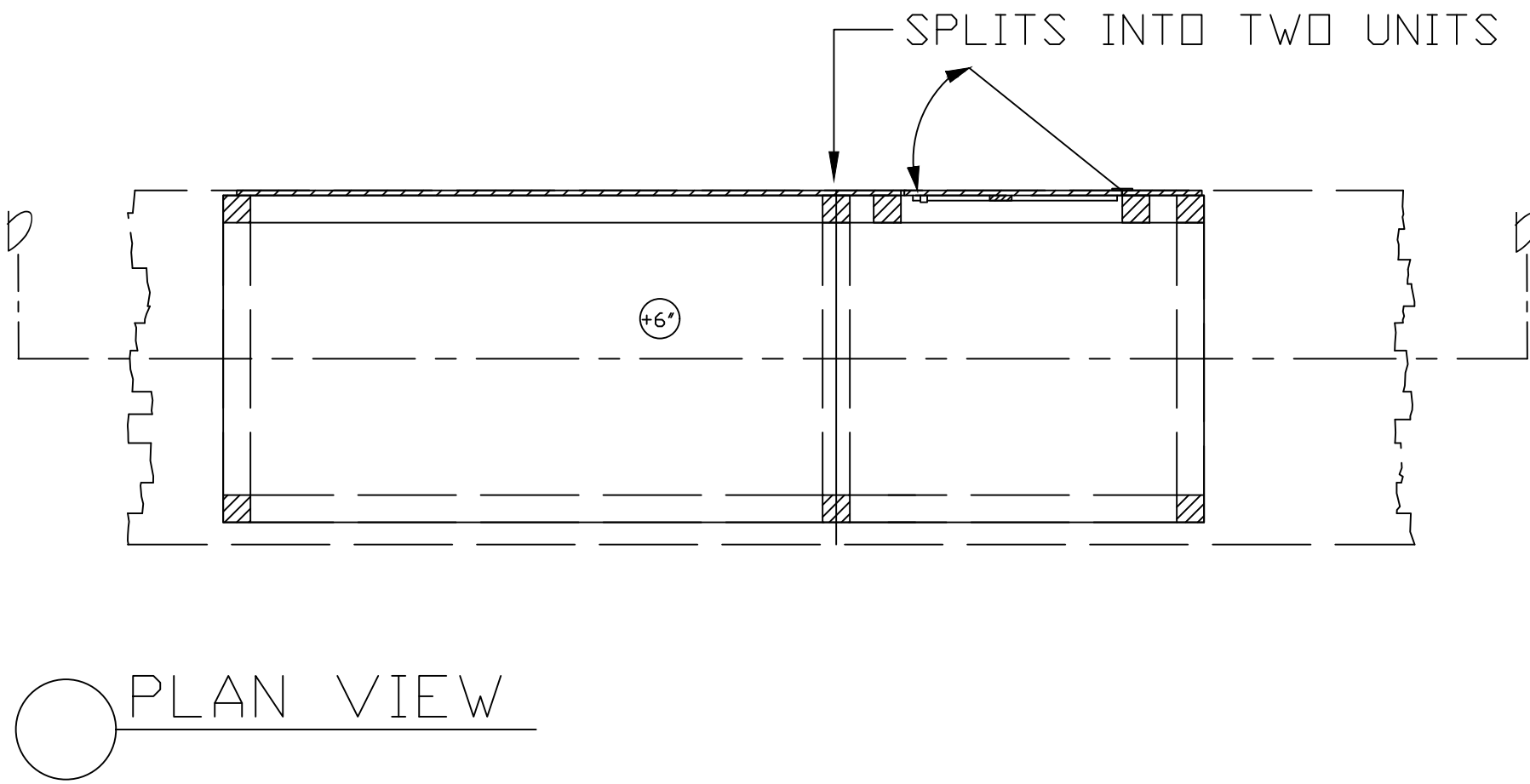
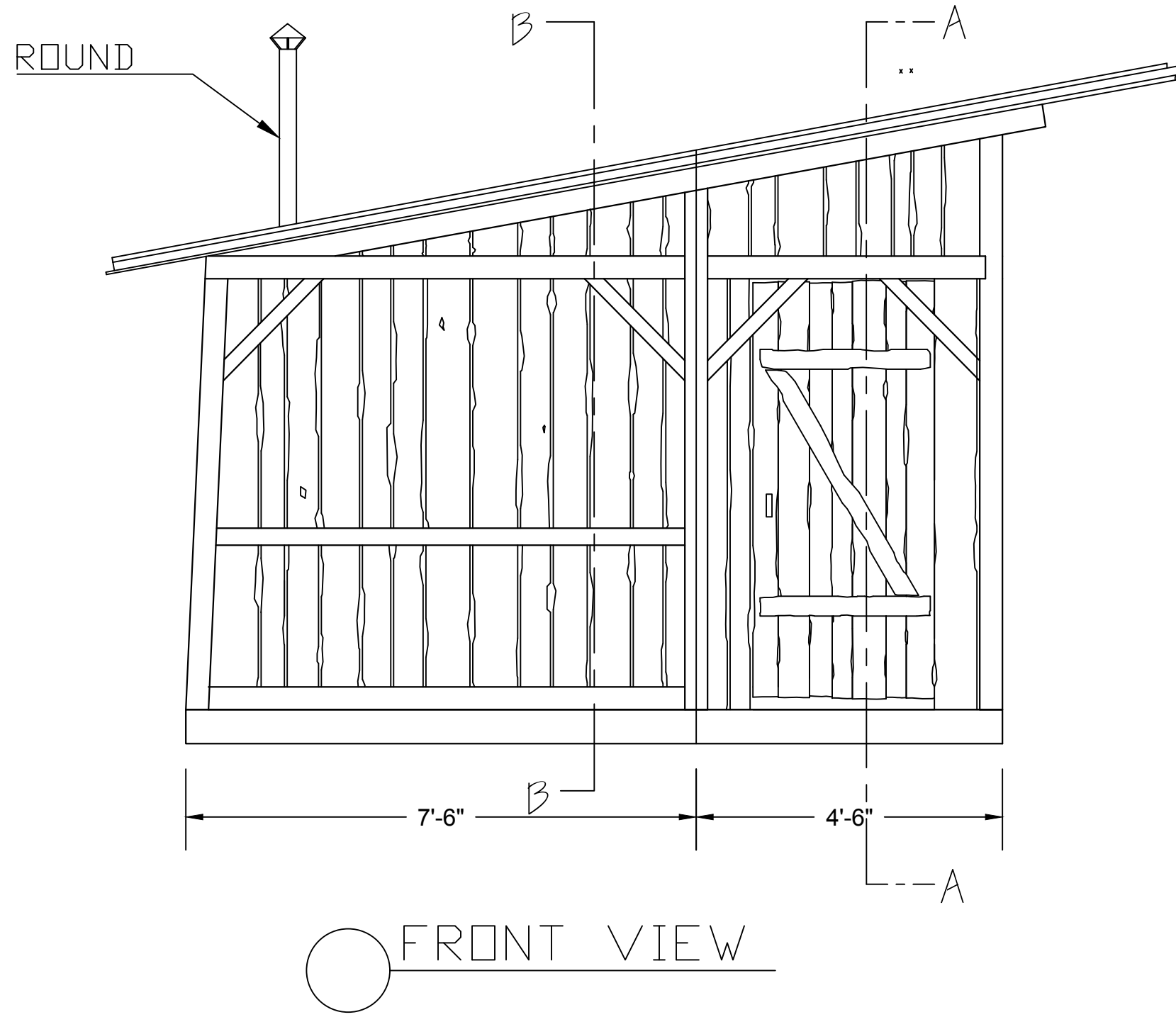
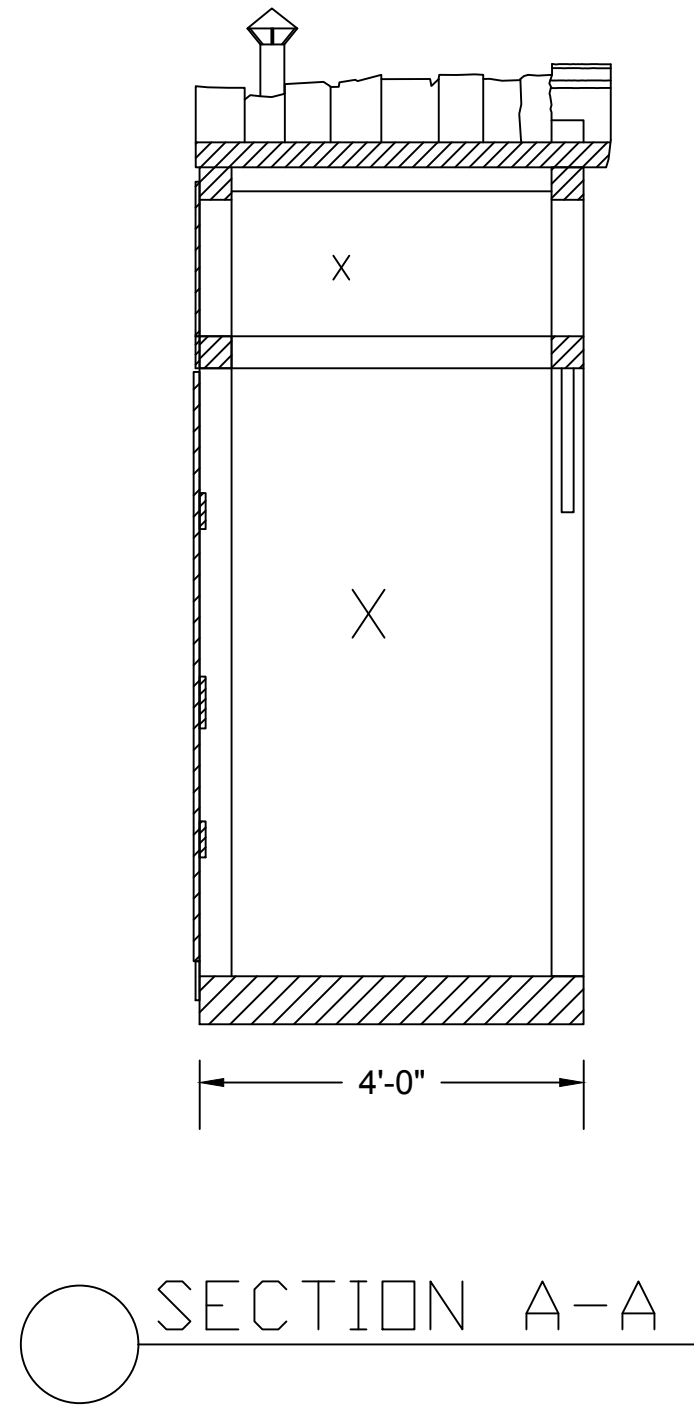
PLATE NO.

10

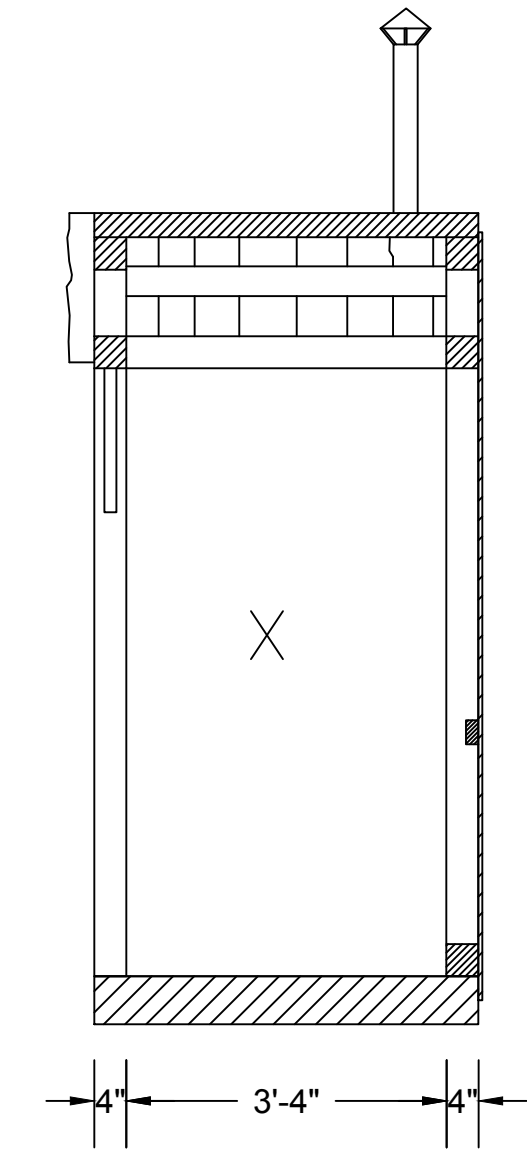




REFERENCES



ROOF REFERENCE



SECTION B-B

- NOTES:
- ROUGH WOOD
  - UNIT ROLLS ON AND OFF
  - SPLITS MIDDLE OF POST INTO TWO SEPARATE UNITS

This drawing is confidential. The reproduction or use of ideas, arrangements, designs, and plans are prohibited without written consent of Erhard Rom. Written dimensions will always override scale should a conflict arise. Responsibility falls solely on the vendors to notify Erhard Rom of any discrepancies between this drawing and actual dimensions. This drawing represents concepts and suggestions only. The design team is not responsible for the structural, mechanical or electrical execution of this drawing. Any structural components within this drawing must be approved by a qualified engineer before installation begins. Furthermore, any other work done is to be performed by qualified personnel only. Equipment and installation must conform to all local and federal codes and fire safety regulations.

SCENIC DESIGNERS:

ERHARD ROM  
OLIVIA TORTORELLA  
MADDIE CORTESE  
EMILY GUERCIA



MONTCLAIR STATE  
UNIVERSITY

AT  
MEMORIAL  
AUDITORIUM

DIRECTOR  
FRANCINE ESPIRITU

OKLAHOMA!

JUD'S SMOKEHOUSE

SCALE: 1/2" = 1'-0" DATE: 1/8/2025 DRAFTED BY: D. TORTORELLA & M. CORTESE

PLATE NO.

11

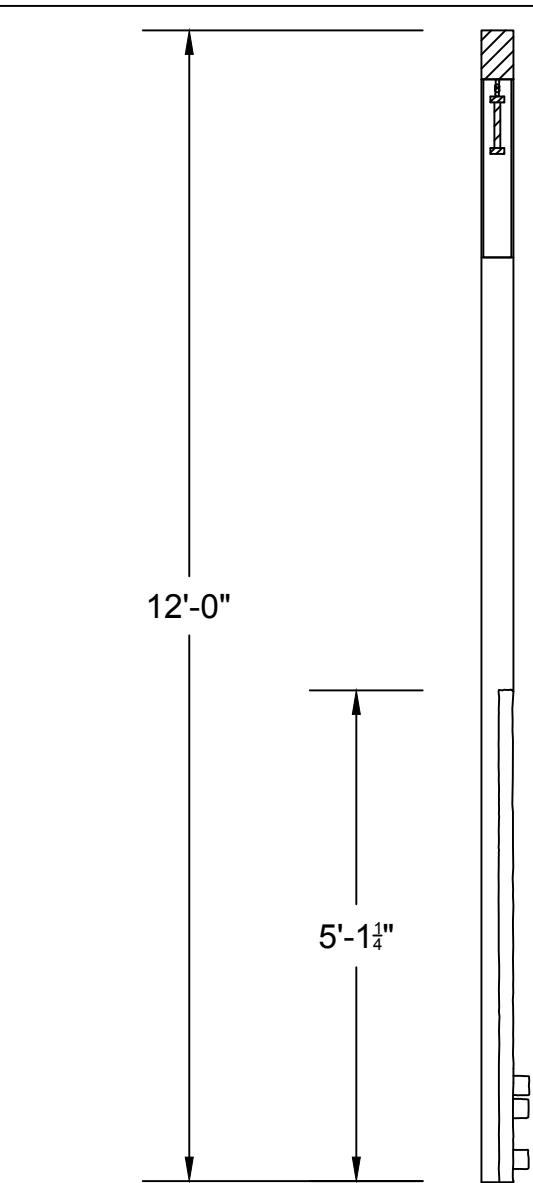


- MAKE SURE GATE STAYS CLOSED WHILE FLYING
- HIDE ALL RIGGING HARDWARE
- 4" T-STRAP HINGES
- CHAIN TO HANG SIGN
- ROUGH WOOD
- SIGN IS OPEN

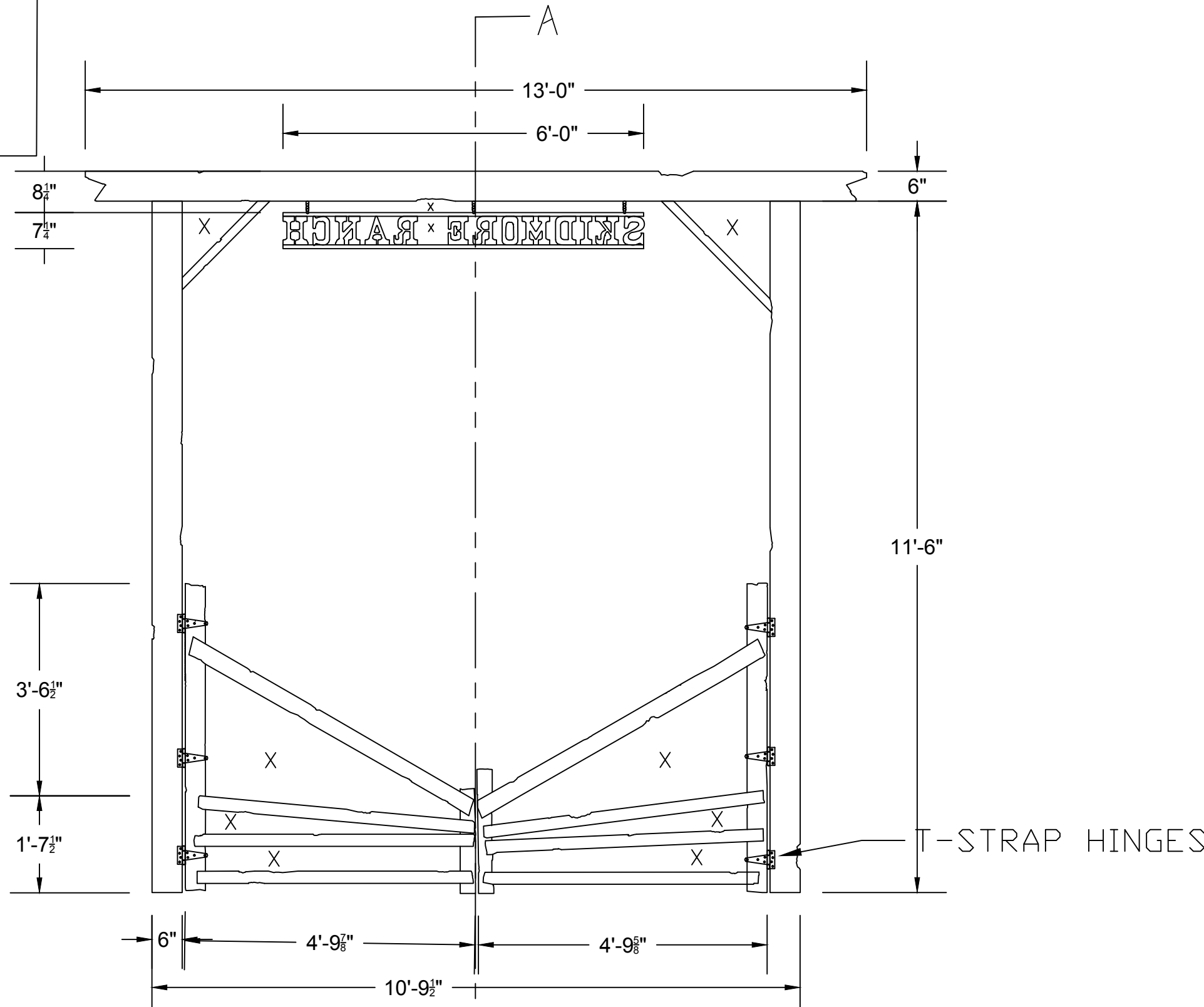
## RIG TO FLY

## NOTES:

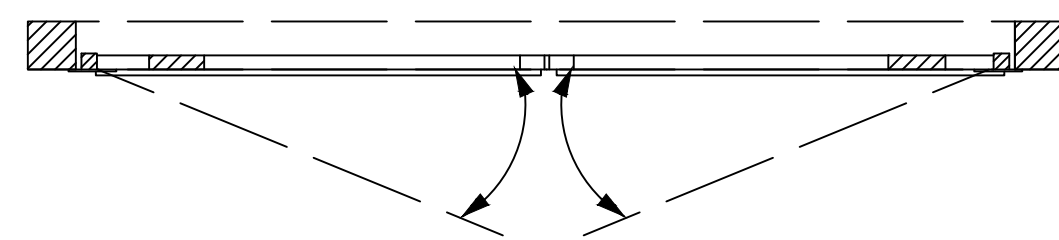
- BLADES ROTATE
- UNIT TRACKS ON AND OFF STAGE



SECTION A-A  
SCALE: 1/2" = 1'-0"



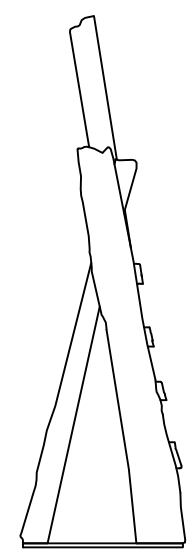
SKIDMORE  
SCALE: 1/2" = 1'-0"



PLAN VIEW  
SCALE: 1/2" = 1'-0"

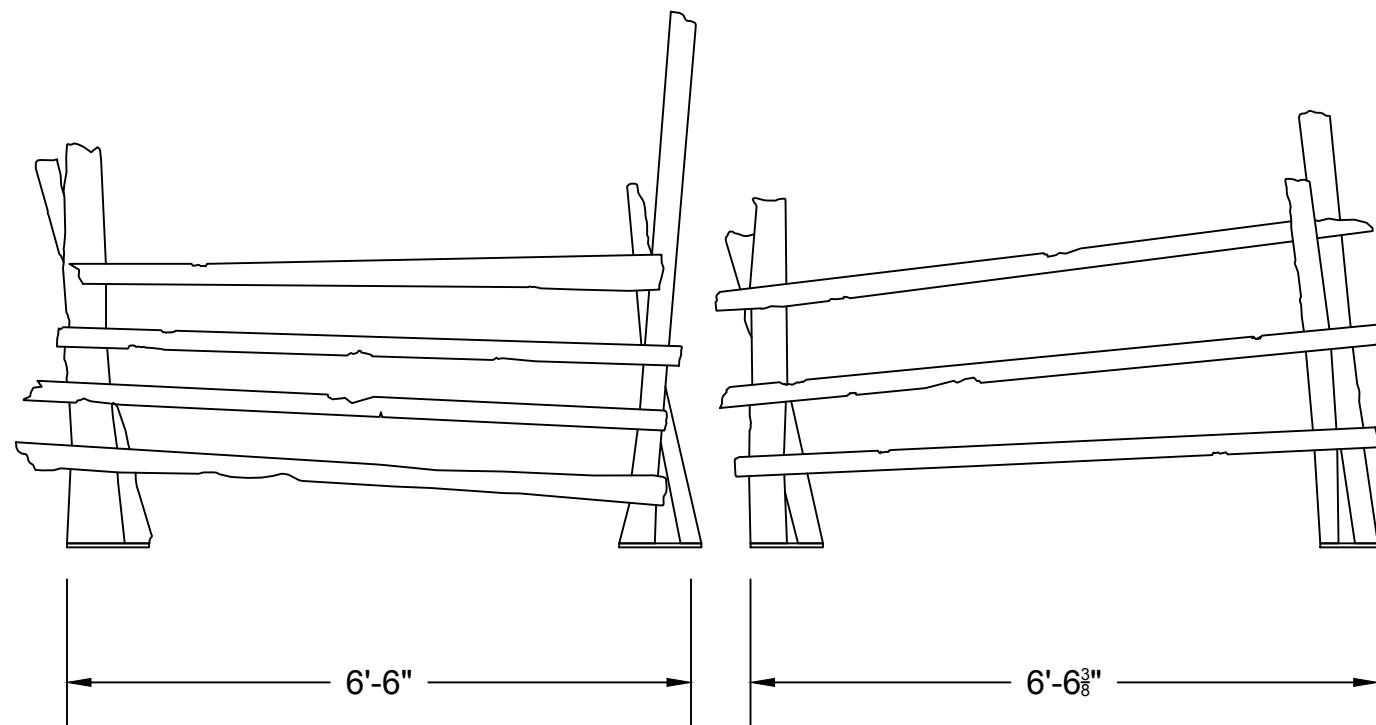
## FENCE NOTES:

- ROUGH WOOD
- ACTORS WILL BE PICKING UP/SLIDING THEM

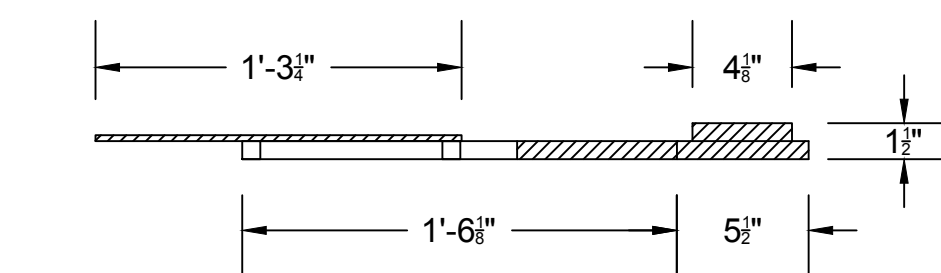


1'-8"

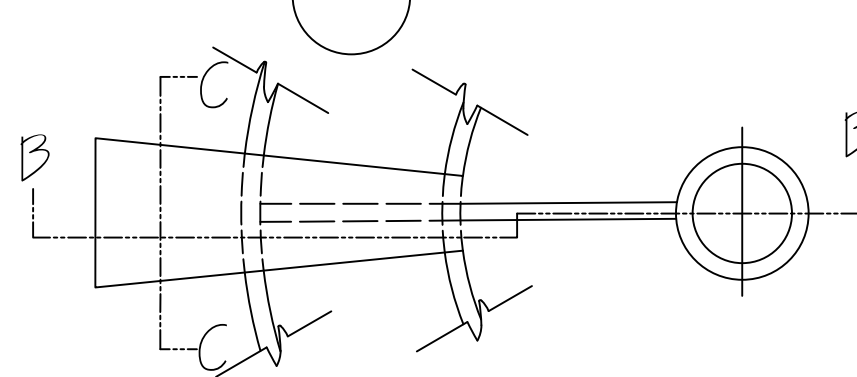
SIDE VIEW  
SCALE: 1/2" = 1'-0"



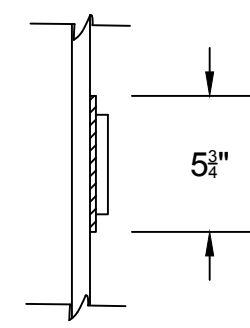
FENCES  
SCALE: 1/2" = 1'-0"



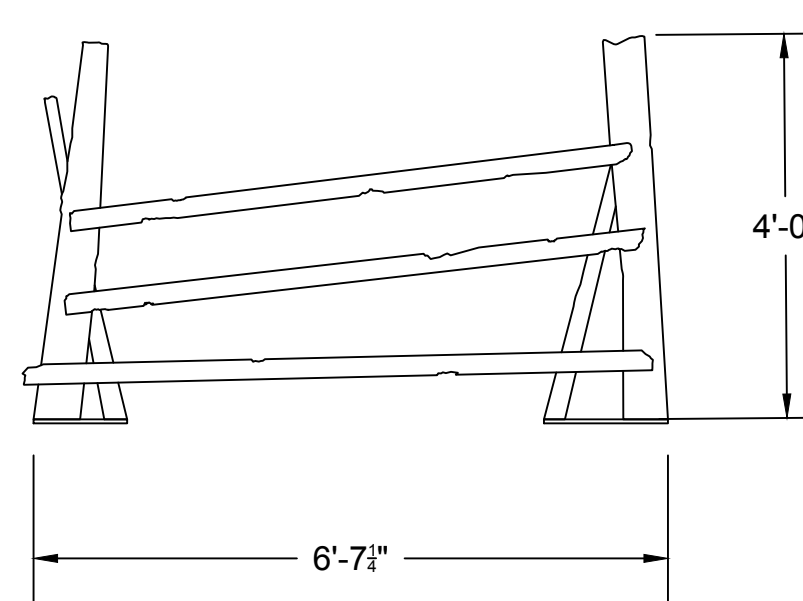
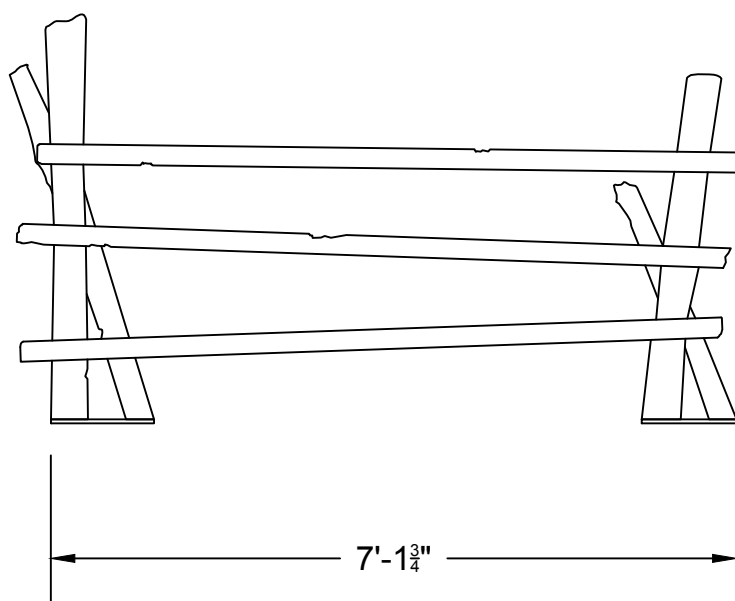
B-B



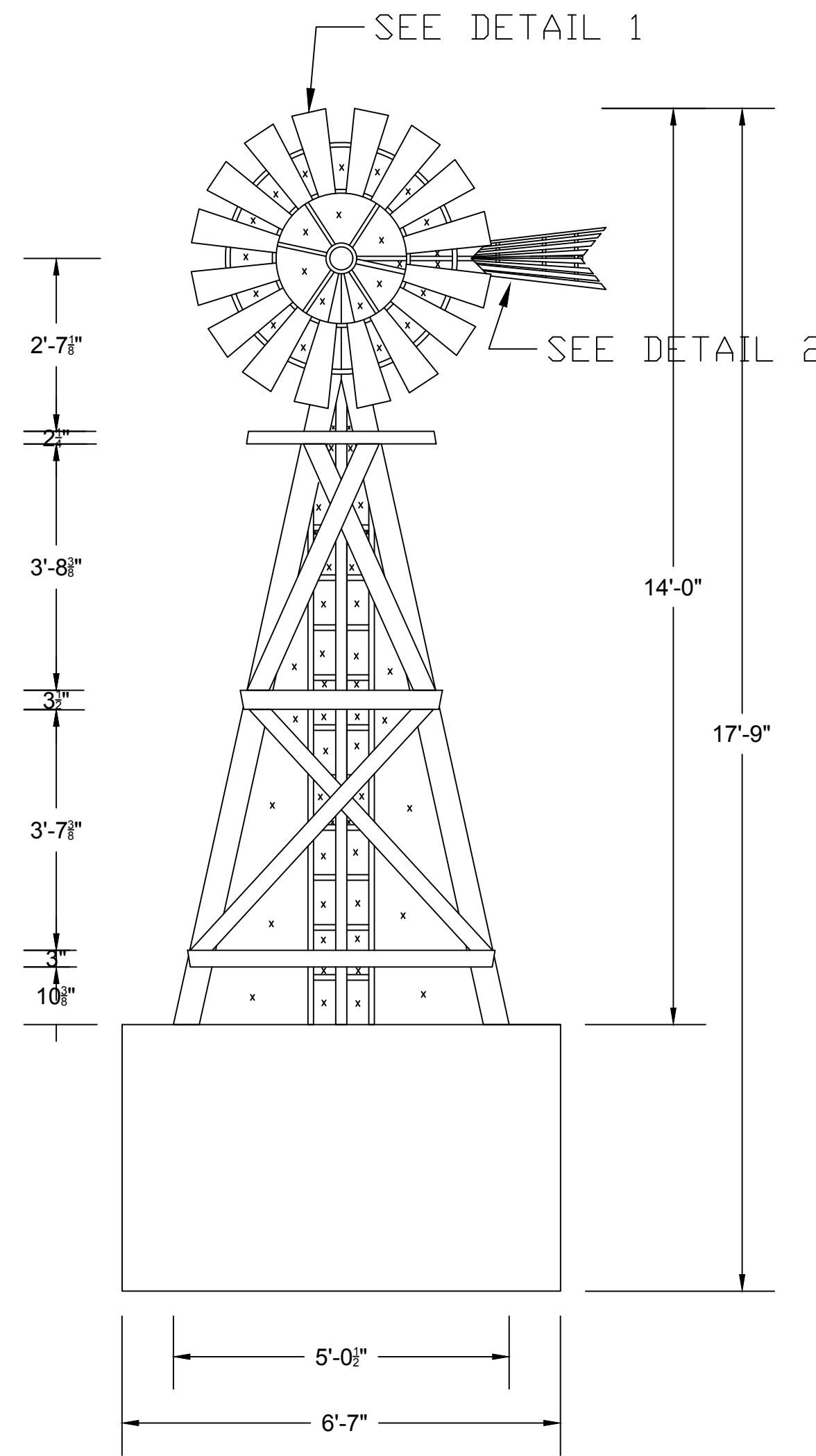
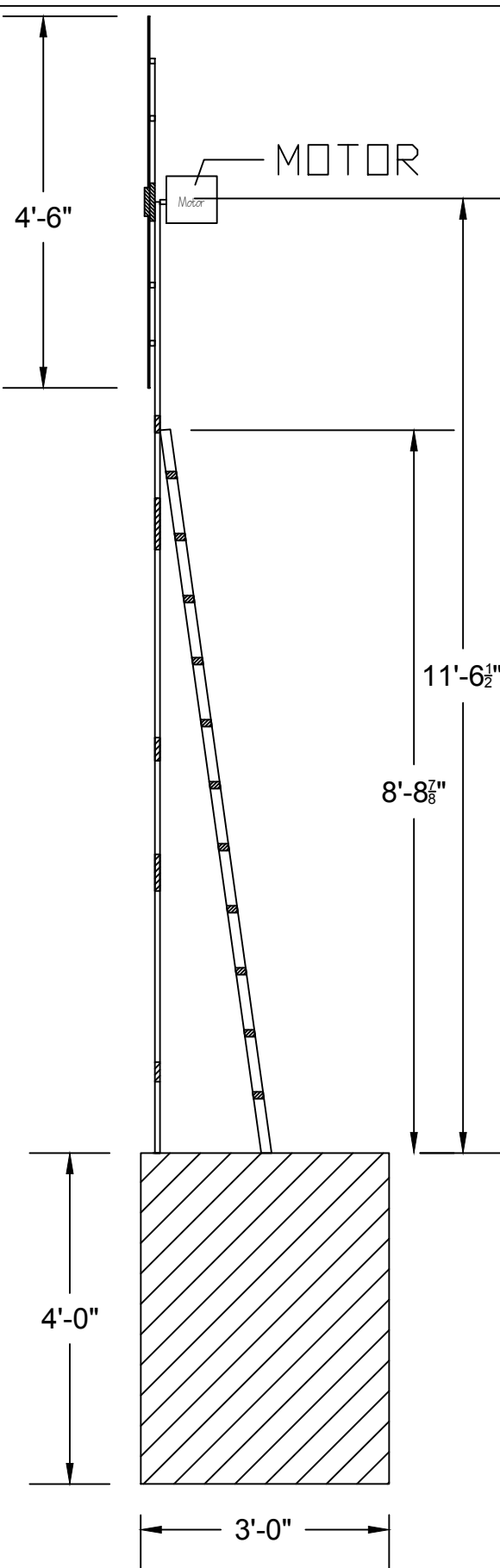
DETAIL 1  
SCALE: 1-1/2" = 1'-0"



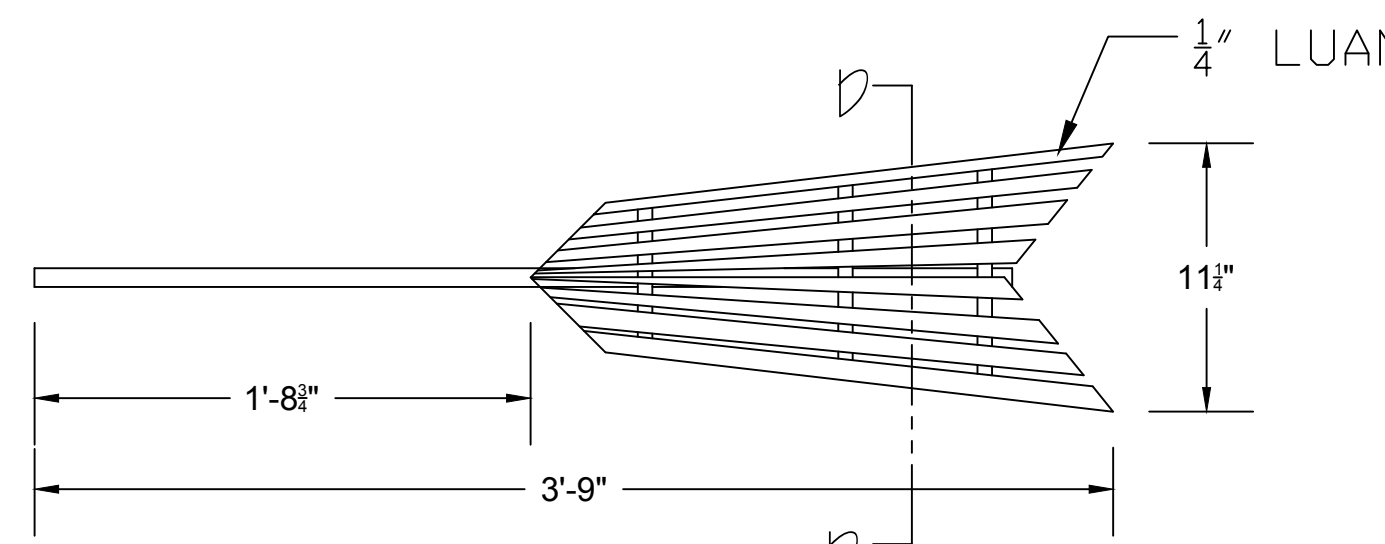
C-C



SECTION  
SCALE: 1/2" = 1'-0"



WINDMILL  
SCALE: 1/2" = 1'-0"



DETAIL 2  
SCALE: 1-1/2" = 1'-0"

D-D



FENCE REFERENCE

This drawing is confidential. The reproduction or use of ideas, arrangements, designs, and plans are prohibited without written consent of Erhard Rom. Written dimensions will always override scale should a conflict arise. Responsibility falls solely on the vendors to notify Erhard Rom of any discrepancies between this drawing and actual dimensions. This drawing represents concepts and suggestions only. The design team is not responsible nor held liable for the structural, mechanical or electrical execution of this drawing. Any structural components within this drawing must be approved by a qualified engineer before installation begins. Furthermore any other work done is to be performed by qualified personnel only. Equipment and installation must conform to all local and federal codes and fire safety regulations.

## SCENIC DESIGNERS:

ERHARD ROM  
OLIVIA TORTORELLA  
MADDIE CORTESE  
EMILY GUERCIA



## MONTCLAIR STATE UNIVERSITY

AT  
MEMORIAL  
AUDITORIUM

## DIRECTOR

FRANCINE ESPIRITU

# OKLAHOMA!

# SKIDMORE,FENCES,& WINDMILL

SCALE: AS NOTED DATE: 1/8/2025 DRAFTED BY: D. TORTORELLA & E. GUERCIA

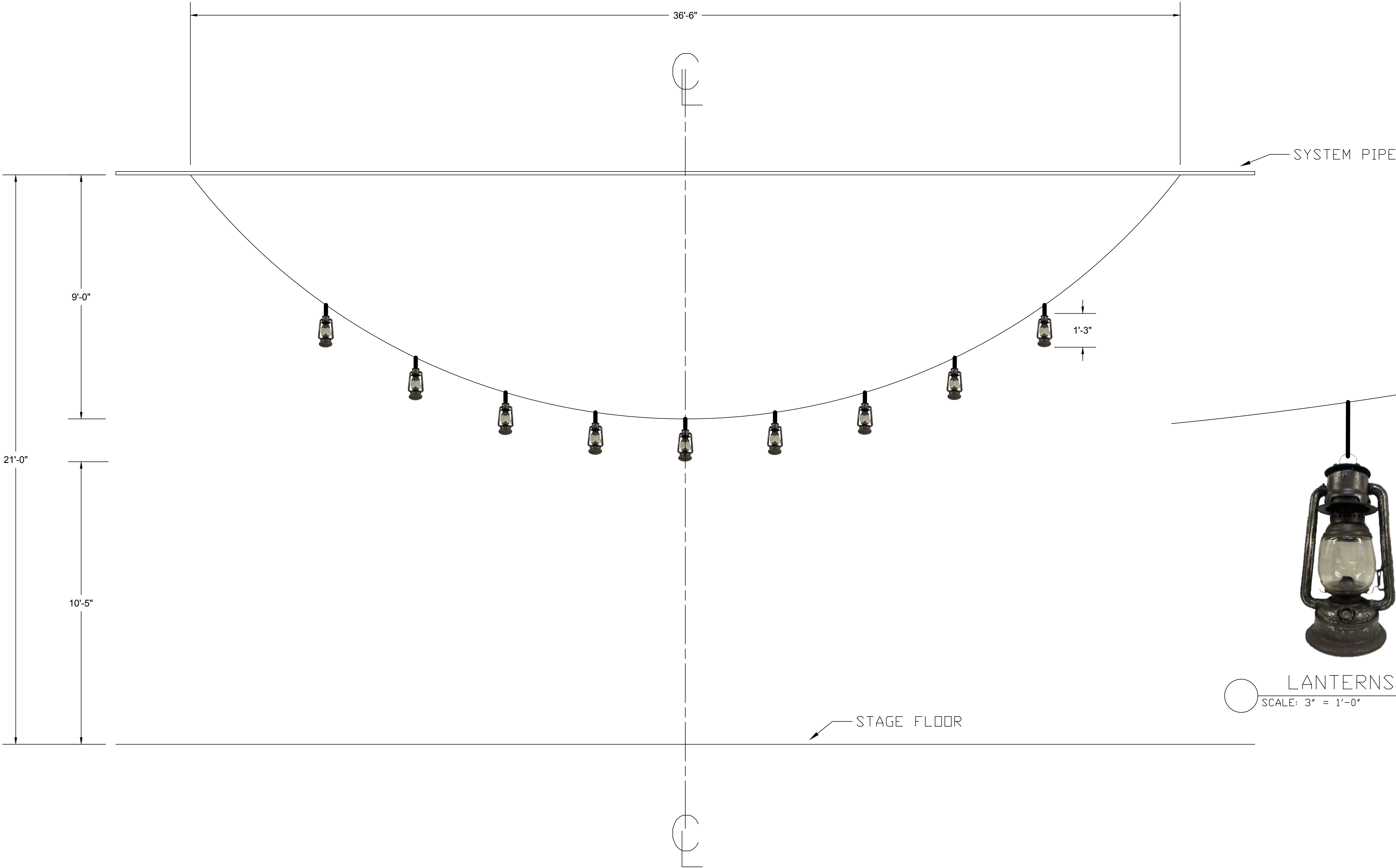
## PLATE NO.

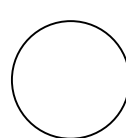
12



- PRACTICAL LIGHTS
- 1" HEMP ROPE
- ELECTRICAL CABLES HIDDEN IN ROPE

RIG TO FLY



 HANGING LANTERNS  
SCALE: 1/2" = 1'-0"



 LANTERNS  
SCALE: 3" = 1'-0"

This drawing is confidential. The reproduction or use of ideas, arrangements, designs, and plans are prohibited without written consent of Erhard Rom. Written dimensions will always override scale should a conflict arise. Responsibility falls solely on the vendors to notify Erhard Rom of any discrepancies between this drawing and actual dimensions. This drawing represents concepts and suggestions only. The design team is not responsible nor held liable for the structural, mechanical or electrical execution of this drawing. Any structural components within this drawing must be approved by a qualified engineer before installation begins. Furthermore any other work done is to be performed by qualified personnel only. Equipment and installation must conform to all local and federal codes and fire safety regulations.

SCENIC DESIGNERS:

ERHARD ROM  
OLIVIA TORTORELLA  
MADDIE CORTESE  
EMILY GUERCIA



MONTCLAIR STATE  
UNIVERSITY  
  
AT  
MEMORIAL  
AUDITORIUM

DIRECTOR  
FRANCINE ESPIRITU

OKLAHOMA!

LANTERNS

SCALE: 1/2" = 1'-0" DATE: 1/8/2025 DRAFTED BY: OLIVIA TORTORELLA

PLATE NO.

13

This drawing is confidential. The reproduction or use of ideas, arrangements, designs, and plans are prohibited without written consent of Erhard Rom. Written dimensions will always override scale should a conflict arise. Responsibility falls solely on the vendors to notify Erhard Rom of any discrepancies between this drawing and actual dimensions. This drawing represents concepts and suggestions only. The design team is not responsible nor held liable for the structural, mechanical or electrical execution of this drawing. Any structural components within this drawing must be approved by a qualified engineer before installation begins. Furthermore any other work done is to be performed by qualified personnel only. Equipment and installation must conform to all local and federal codes and fire safety regulations.

SCENIC DESIGNERS:

ERHARD ROM  
OLIVIA TORTORELLA  
MADDIE CORTESE  
EMILY GUERCIA



MONTCLAIR STATE  
UNIVERSITY  
  
AT  
MEMORIAL  
AUDITORIUM

DIRECTOR  
FRANCINE ESPIRITU

OKLAHOMA!

SKY DROP

SCALE: 1/2" = 1'-0"    DATE: 1/8/2025    DRAFTED BY: OLIVIA TORTORELLA

PLATE NO.

14

RIG TO HANG

GROMMETS AND WEBBING



PAINTED MUSLIN DROP

BOTTOM POCKET PIPE

40'-0"